

ADAMTS7 polyclonal antibody

Catalog: BCP00149

Host: Rabbit

Reactivity: Human

BackGround:

ADAMTS (a disintegrin and metalloproteinase domain with thrombospondin type-1 modules) is a family of zinc-dependent proteases that are implicated in a variety of normal and pathological conditions, including arthritis and cancer. ADAMTS protein family members contain an N-terminal propeptide domain, a metalloproteinase domain, a disintegrin-like domain and a C-terminus that contains a varying number of thrombospondin type-1 (TSP-1) motifs. ADAMTS genes are primarily expressed in fetal tissues, including lung, kidney and liver. ADAMTS-7 (ADAM metalloproteinase with thrombospondin type 1 motif, 7), also known as COMPase, is a 1,686 amino acid protein that exists as two alternatively spliced isoforms. Encoded by a gene that maps to human chromosome 15q25.1, ADAMTS-7 contains eight TSP-1 motifs and binds one zinc ion per subunit. ADAMTS-7 is expressed in heart, brain, placenta, lung, liver, skeletal muscle, kidney and pancreas. ADAMTS-7 is also located in meniscus, bone, tendon, cartilage, synovium, fat and ligaments, and is up-regulated in articular cartilage and synovium in arthritis patients. ADAMTS-7 functions as a metalloprotease and may play a role in the degradation of COMP. ADAMTS-7 is pH dependent, with optimum pH between 7.5 and 9.5.

Product:

Rabbit IgG, 1mg/ml in PBS with 0.02% sodium azide, 50% glycerol, pH7.2.

Molecular Weight:

~ 230 kDa

Swiss-Prot:

Q9UKP4

Purification&Purity:

The antibody was affinity-purified from rabbit antiserum by affinity-chromatography using epitope-specific im-

munogen and the purity is > 95% (by SDS-PAGE).

Applications:

WB: 1:1000~1:2000

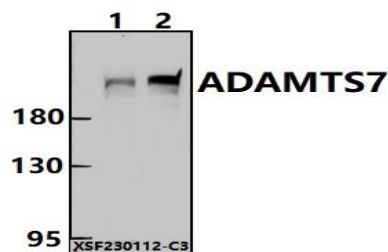
Storage&Stability:

Store at 4 °C short term. Aliquot and store at -20 °C long term. Avoid freeze-thaw cycles.

Specificity:

ADAMTS7 polyclonal antibody detects endogenous levels of ADAMTS7 protein.

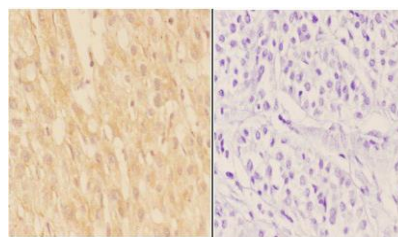
DATA:



Western blot (WB) analysis of ADAMTS7 polyclonal antibody at 1:1000 dilution

Lane1:A549 whole cell lysate(30ug)

Lane2:EC9706 whole cell lysate(30ug)



Note:

For research use only, not for use in diagnostic procedure.