

ADCY 1 (D252) polyclonal antibody

Catalog: BCP00154

Host: Rabbit

Reactivity: Human, Mouse, Rat

BackGround:

Cyclic AMP, in turn, activates several other target molecules to control a broad range of diverse phenomena such as metabolism, gene transcription and memory. Adenylyl cyclases respond to receptor-initiated signals, mediated by the Gs and Gi heterotrimeric G proteins. The binding of an agonist to a Gs-coupled receptor catalyzes the exchange of GDP (bound to $G\alpha$ s) for GTP, the dissociation of GTP- $G\alpha$ s from $G\beta\gamma$ and $G\alpha$ s)-mediated activation of adenylyl cyclase. Adenylyl cyclases type I (AC I) and III (AC III) have distinct staining within the cell nucleus of rat brain sensory neurons. A cyclase I, also known as AC1 or ADCY1, is a 1,119 amino acid multi-pass membrane protein expressed in the brain, retina and adrenal medulla. A cyclase I binds two magnesium ions per subunit and may be involved in regulatory processes in the central nervous system.

Product:

Rabbit IgG, 1mg/ml in PBS with 0.02% sodium azide, 50% glycerol, pH7.2

Molecular Weight:

~ 130 kDa

Swiss-Prot:

Q08828

Purification&Purity:

The antibody was affinity-purified from rabbit antiserum by affinity-chromatography using epitope-specific immunogen and the purity is > 95% (by SDS-PAGE).

Applications:

WB: 1:500~1:1000

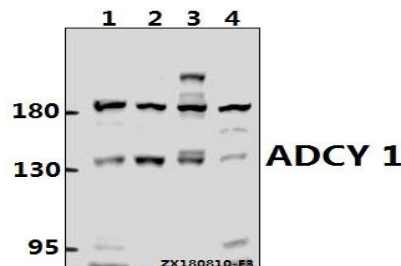
IHC: 1:50~1:200

Storage&Stability:

Store at 4 °C short term. Aliquot and store at -20 °C long term. Avoid freeze-thaw cycles.

Specificity:

ADCY 1 (D252) polyclonal antibody detects endogenous levels of Adenylate cyclase type 1 protein.

DATA:

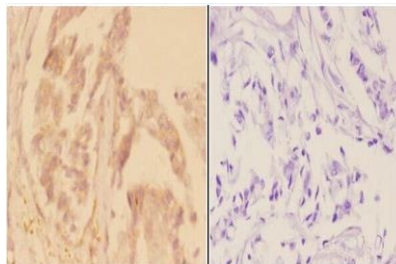
Western blot (WB) analysis of ADCY 1 (D252) Antibody at 1:500 dilution

Lane1:HEK293T whole cell lysate(40ug)

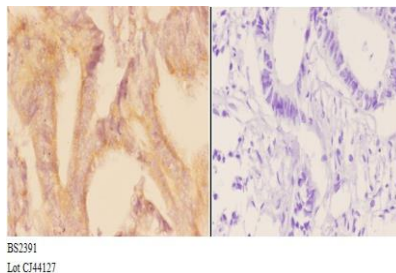
Lane2:MCF-7 whole cell lysate(40ug)

Lane3:C6 whole cell lysate(40ug)

Lane4:AML-12 whole cell lysate(40ug)



Immunohistochemistry (IHC) analyzes of ADCY 1 (D252) pAb in paraffin-embedded human breast carcinoma tissue at 1:50, showing cytoplasm and membrane staining. Negative control (the right) Using PBS instead of primary antibody, secondary antibody is Goat Anti-Rabbit IgG-biotin followed by avidin-peroxidase.



Immunohistochemistry (IHC) analyzes of ADCY 1 (D252) pAb in paraffin-embedded human rectum carcinoma tissue at 1:50, showing cytoplasm and membrane staining. Negative control (the right) Using PBS instead of primary antibody, secondary antibody is Goat Anti-Rabbit IgG-biotin followed by avidin-peroxidase.

Note:

For research use only, not for use in diagnostic procedure.