

Adducin β (E497) polyclonal antibody

Catalog: BCP00157

Host: Rabbit

Reactivity: Human, Mouse, Rat

BackGround:

Adducins are a family of cytoskeleton proteins encoded by three genes (α , β and γ). Adducin is a protein associated with the inner leaflet of the plasma membrane and is one of the proteins localized at the spectrin-actin junction of the membrane skeleton. The cortical actin cytoskeletal network is lost during apoptosis and adducins are central in the cortical actin network organization. Adducin α is a cytoskeletal protein involved with sodium-pump activity in the renal tubule and is associated with hypertension. The expression of Adducin α and Adducin γ is ubiquitous in contrast to the restricted expression of Adducin β . Adducin β is expressed at high levels in brain and hematopoietic tissues, such as bone marrow in humans, and spleen in mice.

Product:

Rabbit IgG, 1mg/ml in PBS with 0.02% sodium azide, 50% glycerol, pH7.2

Molecular Weight:

~ 81 kDa

Swiss-Prot:

P35612

Purification&Purity:

The antibody was affinity-purified from rabbit antiserum by affinity-chromatography using epitope-specific immunogen and the purity is > 95% (by SDS-PAGE).

Applications:

WB: 1:500~1:1000

IHC: 1:50~1:200

IF: 1:50~1:200

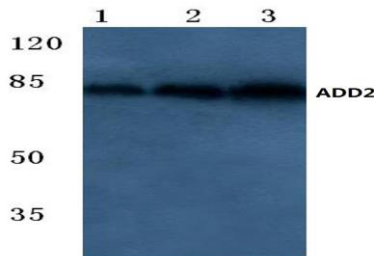
Storage&Stability:

Store at 4 °C short term. Aliquot and store at -20 °C long term. Avoid freeze-thaw cycles.

Specificity:

Adducin β (E497) polyclonal antibody detects endogenous levels of Adducin β protein.

DATA:



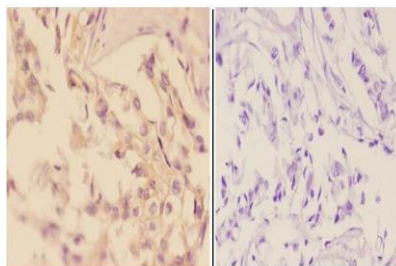
Western blot (WB) analysis of Adducin β (E497) pAb at 1:500 dilution

Lane1:C6 whole cell lysate(40ug)

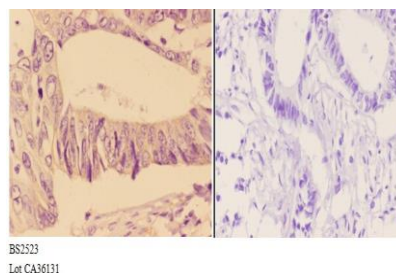
Lane2:The Brain tissue lysate of Mouse(40ug)

Lane3:U-87MG whole cell lysate(40ug)

Lane4:K562 whole cell lysate(40ug)



Immunohistochemistry (IHC) analyzes of Adducin β (E497) pAb in paraffin-embedded human breast carcinoma tissue at 1:50, showing cytoplasm and membrane staining. Negative control (the right) Using PBS instead of primary antibody, secondary antibody is Goat Anti-Rabbit IgG-biotin followed by avidin-peroxidase.



Immunohistochemistry (IHC) analyzes of Adducin β (E497) pAb in paraffin-embedded human rectum carcinoma tissue at 1:50, showing cytoplasm and membrane staining. Negative control (the right) Using PBS instead of primary antibody, secondary antibody is Goat Anti-Rabbit IgG-biotin followed by avidin-peroxidase.

Note:

For research use only, not for use in diagnostic procedure.