

BUB1B (T368) polyclonal antibody

Catalog: BCP00300

Host: Rabbit

Reactivity: Human,Mouse,Rat

BackGround:

Human cells contain two related protein kinases, BUB1 and BUBR1, that appear to have evolved from a single ancestral BUB1 gene. Both kinases are concentrated near the surface of the kinetochore where they monitor kinetochore-microtubule interactions. BUB1 and BUBR1 bind to kinetochores and are postulated to be components of the mitotic checkpoint, which monitors kinetochore activities to determine if chromosomes have achieved alignment at the spindle equator. BUBR1 is essential for normal mitotic progression as it prevents cells from prematurely entering anaphase. BUB3 is a conserved component of the mitotic spindle assembly complex and is also involved with the essential spindle checkpoint pathway that operates during early embryogenesis.

Product:

Rabbit IgG, 1mg/ml in PBS with 0.02% sodium azide, 50% glycerol, pH7.2

Molecular Weight:

~ 130 kDa

Swiss-Prot:

O60566

Purification&Purity:

The antibody was affinity-purified from rabbit antiserum by affinity-chromatography using epitope-specific immunogen and the purity is > 95% (by SDS-PAGE).

Applications:

WB: 1:500~1:1000

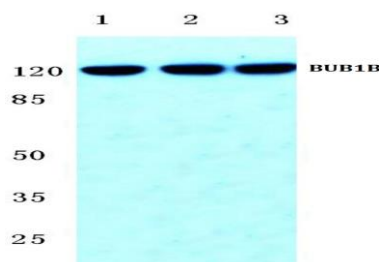
IP: 1:50~1:200

Storage&Stability:

Store at 4 °C short term. Aliquot and store at -20 °C long term. Avoid freeze-thaw cycles.

Specificity:

BUB1B (T368) polyclonal antibody detects endogenous levels of BUB1B protein.

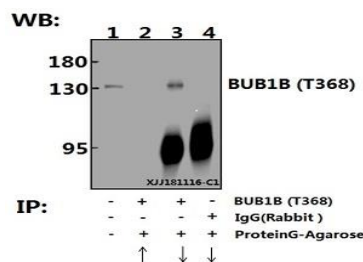
DATA:

Western blot (WB) analysis of BUB1B (T368) polyclonal antibody at 1:500 dilution

Lane1:HEK293T cell lysate

Lane2:Raw264.7 cell lysate

Lane3:PC12 cell lysate



Immunoprecipitation of HEK293T cell lysate using BUB1B (T368) polyclonal antibody (Sepharose Bead Conjugate) #BD0048(lane 2 and lane 3) and Nonspecific IgG Control (Sepharose Bead Conjugate) #BD0048 (lane 4).Lane 1 is 30% input.The western blot was probed using BUB1B (T368). “ ↑ ” (supernatant) ; “ ↓ ” (deposition)

Note:

For research use only, not for use in diagnostic procedure.