

C9 (H216) polyclonal antibody

Catalog: BCP00309

Host: Rabbit

Reactivity: Human,Mouse,Rat

BackGround:

C9 is synthesised in the liver and monocytes, and is a plasma protein consisting of a single polypeptide chain of molecular weight 71kDa. Normal plasma concentration is 60mg/L. C9 forms part of the membrane attack complex (MAC) the cytolytic terminal complex of the complement pathways. C9 binds to the membrane associated C5b-8, binding of C9 to C5b-8 leads to the circular polymerisation of 12-18 C9 molecules. This is the basis of the hydrophilic, protein-walled, trans-membrane channel formed by the MAC, which leads to cell lysis and destruction.

Product:

Rabbit IgG, 1mg/ml in PBS with 0.02% sodium azide, 50% glycerol, pH7.2

Molecular Weight:

~ 63 kDa

Swiss-Prot:

P02748

Purification&Purity:

The antibody was affinity-purified from rabbit antiserum by affinity-chromatography using epitope-specific immunogen and the purity is > 95% (by SDS-PAGE).

Applications:

WB: 1:500~1:1000

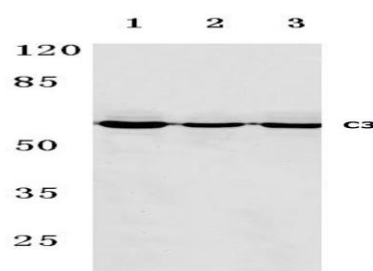
Storage&Stability:

Store at 4 °C short term. Aliquot and store at -20 °C long term. Avoid freeze-thaw cycles.

Specificity:

C9 (H216) polyclonal antibody detects endogenous levels of Complement component C9 protein.

DATA:



Western blot (WB) analysis of C9 (H216) polyclonal antibody at 1:500 dilution

Lane1:Hela cell lysate

Lane2:Raw264.7 cell lysate

Lane3:PC12 cell lysate

Note:

For research use only, not for use in diagnostic procedure.