

CA XII (N273) polyclonal antibody

Catalog: BCP00311

Host: Rabbit

Reactivity: Human, Mouse

BackGround:

Carbonic anhydrases (CA) are a family of ancient zinc metalloenzymes found in almost all living organisms. All CA can be divided into 3 distinct classes (α , β , and γ) that evolved independently and have no significant homology in sequence and overall folding. All functional CA catalyze the reversible hydration of CO₂ into HCO₃⁻ and H⁺ and contain a zinc atom in the active sites essential for catalysis. There are many isoforms of CA in mammals and they all belong to the α class. CA12, a member of the α class, is a plasma membrane protein with the catalytic domain in the extracellular space. CA12 is widely expressed in many tissues and is found at high levels in renal cell cancers. Its expression is induced by hypoxia in solid tumors and is considered to be a tumor marker. Genetic mutations in CA12 are associated with hyperchlorhidrosis.

Product:

Rabbit IgG, 1mg/ml in PBS with 0.02% sodium azide, 50% glycerol, pH7.2

Molecular Weight:

~ 50 kDa

Swiss-Prot:

O43570

Purification&Purity:

The antibody was affinity-purified from rabbit antiserum by affinity-chromatography using epitope-specific immunogen and the purity is > 95% (by SDS-PAGE).

Applications:

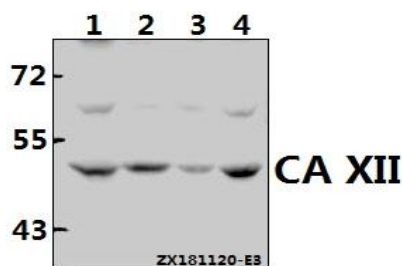
WB: 1:500~1:1000

Storage&Stability:

Store at 4 °C short term. Aliquot and store at -20 °C long term. Avoid freeze-thaw cycles.

Specificity:

CA XII (N273) polyclonal antibody detects endogenous levels of CA XII protein.

DATA:

Western blot (WB) analysis of CA XII (N273) polyclonal antibody at 1:500 dilution

Lane1:HCT116 whole cell lysate(40ug)

Lane2:PC3 whole cell lysate(40ug)

Lane3:HEK293T whole cell lysate(40ug)

Lane4:CT26 whole cell lysate(40ug)

Note:

For research use only, not for use in diagnostic procedure.