

## Calpain 2 (K354) polyclonal antibody

Catalog: BCP00321

Host: Rabbit

Reactivity: Human, Mouse, Rat

### BackGround:

Mu Calpain, and m calpain, also known as Calpain 2, are intracellular, calcium dependent cysteine proteases. Mu calpain has a micromolar sensitivity (thus the mu) as compared to the millimolar calcium sensitivity of m calpain. Both Calpains 1 and 2 are composed of an 80 kD subunit and a 30 kD subunit. Whereas the 30 kDa subunit is shared by both enzymes, the larger catalytic subunits are different and exhibit the distinct  $\text{Ca}^{++}$  requirements that are suggested by their names.

### Product:

Rabbit IgG, 1mg/ml in PBS with 0.02% sodium azide, 50% glycerol, pH7.2

### Molecular Weight:

~ 80 kDa

### Swiss-Prot:

P17655

### Purification&Purity:

The antibody was affinity-purified from rabbit antiserum by affinity-chromatography using epitope-specific immunogen and the purity is > 95% (by SDS-PAGE).

### Applications:

WB: 1:500~1:1000

IHC: 1:50~1:200

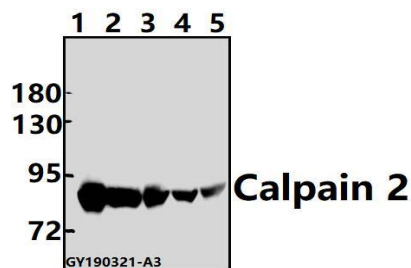
### Storage&Stability:

Store at 4 °C short term. Aliquot and store at -20 °C long term. Avoid freeze-thaw cycles.

### Specificity:

Calpain 2 (K354) polyclonal antibody detects endogenous levels of Calpain-2 catalytic subunit protein.

### DATA:



Western blot (WB) analysis of Calpain 2 (K354) pAb at 1:500 dilution

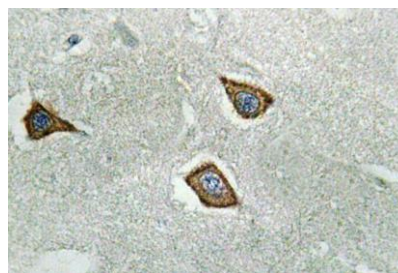
Lane1:Beas-2B whole cell lysate(40ug)

Lane2:HEK293T whole cell lysate(40ug)

Lane3:PC3 whole cell lysate(40ug)

Lane4:The Kidney tissue lysate of Mouse(40ug)

Lane5:The Kidney tissue lysate of Rat(40ug)



Immunohistochemistry (IHC) analyzes of Calpain 2 (K354) pAb in paraffin-embedded human brain tissue.

### Note:

For research use only, not for use in diagnostic procedure.