

CARP (A243) polyclonal antibody

Catalog: BCP00332

Host: Rabbit

Reactivity: Mouse,Rat

BackGround:

CARphospho-1 (cell division cycle and apoptosis regulator 1), also known as CCAR1 or DIS, is a 1,150 amino acid protein that localizes to the perinuclear region of the cytoplasm and contains one SAP domain. Expressed in several epithelial cancer cell lines, including breast, colon, prostate and leukemia, CARphospho-1 is involved in apoptotic signaling, as well as in cell cycle progression and cell proliferation via interaction with c-Myc and cyclin B1. CARphospho-1 is subject to DNA damage-induced phosphorylation, probably by ATM or ATR. The gene encoding CARphospho-1 maps to human chromosome 10, which houses over 1,200 genes and comprises nearly 4.5% of the human genome. Defects in some of the genes that map to chromosome 10 are associated with Charcot-MarieTooth disease, Jackson-Weiss syndrome, Usher syndrome, nonsyndromic deafness, Wolman's syndrome, Cowden syndrome, multiple endocrine neoplasia type 2 and porphyria

Product:

Rabbit IgG, 1mg/ml in PBS with 0.02% sodium azide, 50% glycerol, pH7.2

Molecular Weight:

~ 45 kDa

Swiss-Prot:

Q15327

Purification&Purity:

The antibody was affinity-purified from rabbit antiserum by affinity-chromatography using epitope-specific immunogen and the purity is > 95% (by SDS-PAGE).

Applications:

WB: 1:500~1:1000

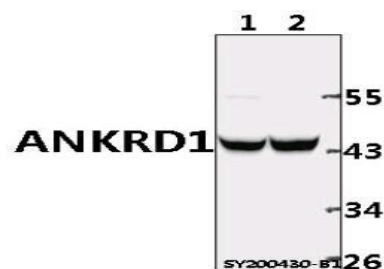
IHC: 1:50~1:200

Storage&Stability:

Store at 4 °C short term. Aliquot and store at -20 °C long term. Avoid freeze-thaw cycles.

Specificity:

CARP (A243) polyclonal antibody detects endogenous levels of CARP protein.

DATA:

Western blot (WB) analysis of ANKRD1 pAb at 1:500 dilution

Lane1:The Muscle tissue lysate of Rat(40ug)

Lane2:The Muscle tissue lysate of Mouse(40ug)

Note:

For research use only, not for use in diagnostic procedure.