

## Cathepsin B (N217) polyclonal antibody

Catalog: BCP00352

Host: Rabbit

Reactivity: Human, Mouse, Rat

### BackGround:

The cathepsin family of proteolytic enzymes contains several diverse classes of proteases. The cysteine protease class comprises cathepsins B, L, H, K, S, and O. The aspartyl protease class is composed of cathepsins D and E. Cathepsin G is in the serine protease class. Most cathepsins are lysosomal and each is involved in cellular metabolism, participating in various events such as peptide biosynthesis and protein degradation. Cathepsin B is expressed in luminal epithelial cells, indicating that cathepsin B is a marker for secretory cell death.

### Product:

Rabbit IgG, 1mg/ml in PBS with 0.02% sodium azide, 50% glycerol, pH7.2

### Molecular Weight:

~ 36 kDa

### Swiss-Prot:

P07858

### Purification&Purity:

The antibody was affinity-purified from rabbit antiserum by affinity-chromatography using epitope-specific immunogen and the purity is > 95% (by SDS-PAGE).

### Applications:

WB: 1:500~1:1000

IHC: 1:50~1:200

### Storage&Stability:

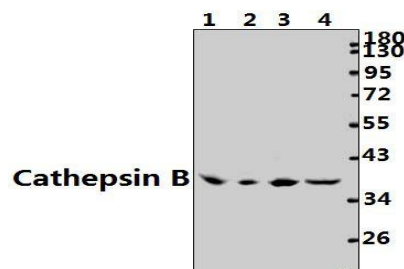
Store at 4 °C short term. Aliquot and store at -20 °C long term. Avoid freeze-thaw cycles.

### Specificity:

Cathepsin B (N217) polyclonal antibody detects endoge-

nous levels of Cathepsin B protein.

### DATA:



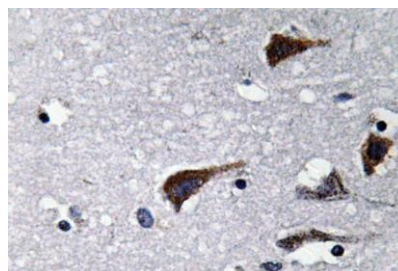
Western blot (WB) analysis of Cathepsin B (N217) pAb at 1:2000 dilution

Lane1: The Embryo tissue lysate of Mouse(40ug)

Lane2: The Lung tissue lysate of Rat(40ug)

Lane3: HCT116 whole cell lysate(40ug)

Lane4: A549 whole cell lysate(40ug)



Immunohistochemistry (IHC) analyzes of Cathepsin B (N217) pAb in paraffin-embedded human brain tissue.

### Note:

For research use only, not for use in diagnostic procedure.