

CD146 polyclonal antibody

Catalog: BCP00390

Host: Rabbit

Reactivity: Human

BackGround:

Plays a role in cell adhesion, and in cohesion of the endothelial monolayer at intercellular junctions in vascular tissue. Its expression may allow melanoma cells to interact with cellular elements of the vascular system, thereby enhancing hematogeneous tumor spread. Could be an adhesion molecule active in neural crest cells during embryonic development. Acts as surface receptor that triggers tyrosine phosphorylation of FYN and PTK2/FAK1, and a transient increase in the intracellular calcium concentration.

Product:

Rabbit IgG, 1mg/ml in PBS with 0.02% sodium azide, 50% glycerol, pH7.2.

Molecular Weight:

~110 kDa

Swiss-Prot:

P43121

Purification&Purity:

The antibody was affinity-purified from rabbit antiserum by affinity-chromatography using epitope-specific immunogen and the purity is > 95% (by SDS-PAGE).

Applications:

WB: 1:2000~1:5000

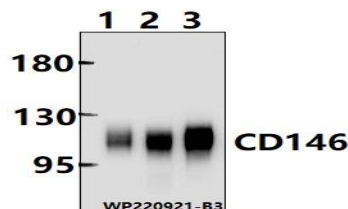
IP 1:50 - 1:200

Storage&Stability:

Store at 4 °C short term. Aliquot and store at -20 °C long term. Avoid freeze-thaw cycles.

Specificity:

CD146 polyclonal antibody detects endogenous levels of CD146 protein.

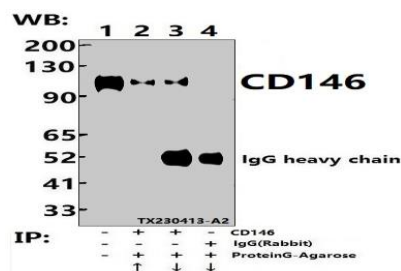
DATA:

Western blot (WB) analysis of CD146 polyclonal antibody at 1:2000 dilution

Lane1:L02 cell membrane lysate(20ug)

Lane2:A549 cell membrane lysate(20ug)

Lane3:MCF-7 cell membrane lysate(20ug)



Immunoprecipitation of MCF-7 cell lysates using CD146 pAb (Sepharose Bead Conjugate)#BD0048 (lane 2 and lane 3) and Nonspecific IgG Control (Sepharose Bead Conjugate)#BD0048 (lane 4). Lane 1 is 30% input. The western blot was probed using CD146 pAb.

Note:

For research use only, not for use in diagnostic procedure.