

CD158b2 polyclonal antibody

Catalog: BCP00396

Host: Rabbit

Reactivity: Human

BackGround:

Receptor on natural killer (NK) cells for HLA-C alleles (HLA-Cw1, HLA-Cw3 and HLA-Cw7). Inhibits the activity of NK cells thus preventing cell lysis.

Product:

Rabbit IgG, 1mg/ml in PBS with 0.02% sodium azide, 50% glycerol, pH7.2.

Molecular Weight:

~45 kDa

Swiss-Prot:

P43628

Purification&Purity:

The antibody was affinity-purified from rabbit antiserum by affinity-chromatography using epitope-specific immunogen and the purity is > 95% (by SDS-PAGE).

Applications:

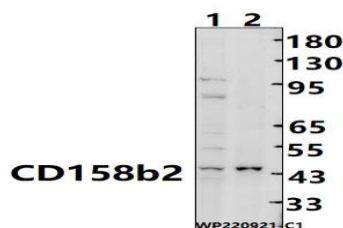
WB: 1:1000~1:2000

Storage&Stability:

Store at 4 °C short term. Aliquot and store at -20 °C long term. Avoid freeze-thaw cycles.

Specificity:

CD158b2 polyclonal antibody detects endogenous levels of CD158b2 protein.

DATA:

Western blot (WB) analysis of CD158b2 polyclonal antibody at 1:1000 dilution

Lane1:MCF-7 cell membrane lysate(25ug)

Lane2:A549 cell membrane lysate(25ug)

Note:

For research use only, not for use in diagnostic procedure.