

CD158e polyclonal antibody

Catalog: BCP00397

Host: Rabbit

Reactivity: Human,Rat

BackGround:

Receptor on natural killer (NK) cells for HLA Bw4 allele. Inhibits the activity of NK cells thus preventing cell lysis.

Product:

Rabbit IgG, 1mg/ml in PBS with 0.02% sodium azide, 50% glycerol, pH7.2.

Molecular Weight:

~ 49 kDa

Swiss-Prot:

P43629

Purification&Purity:

The antibody was affinity-purified from rabbit antiserum by affinity-chromatography using epitope-specific immunogen and the purity is > 95% (by SDS-PAGE).

Applications:

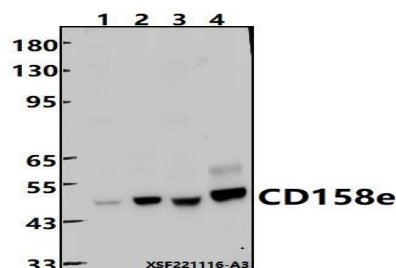
WB: 1:2000~1:5000

Storage&Stability:

Store at 4 °C short term. Aliquot and store at -20 °C long term. Avoid freeze-thaw cycles.

Specificity:

CD158e polyclonal antibody detects endogenous levels of CD158e protein.

DATA:

Western blot (WB) analysis of CD158e polyclonal antibody at 1:2000 dilution

Lane1:A549 whole cell lysate(30ug)

Lane2:L02 cell membrane lysate(24ug)

Lane3:HepG2 whole cell lysate(30ug)

Lane4:PMVEC whole cell lysate(30ug)

Note:

For research use only, not for use in diagnostic procedure.