

## CD161 polyclonal antibody

Catalog: BCP00401

Host: Rabbit

Reactivity: Rat,Mouse,Human

### BackGround:

Plays an inhibitory role on natural killer (NK) cells cytotoxicity. Activation results in specific acid sphingomyelinase/SMPD1 stimulation with subsequent marked elevation of intracellular ceramide. Activation also leads to AKT1/PKB and RPS6KA1/RSK1 kinases stimulation as well as markedly enhanced T-cell proliferation induced by anti-CD3. Acts as a lectin that binds to the terminal carbohydrate Gal- $\alpha$ (1,3)Gal epitope as well as to the N-acetylactosamine epitope. Binds also to CLEC2D/LLT1 as a ligand and inhibits NK cell-mediated cytotoxicity as well as interferon-gamma secretion in target cells.

### Product:

Rabbit IgG, 1mg/ml in PBS with 0.02% sodium azide, 50% glycerol, pH7.2.

### Molecular Weight:

~ 43 kDa

### Swiss-Prot:

Q12918

### Purification&Purity:

The antibody was affinity-purified from rabbit antiserum by affinity-chromatography using epitope-specific immunogen and the purity is > 95% (by SDS-PAGE).

### Applications:

WB: 1:5000~1:10000

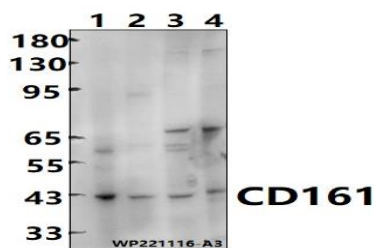
### Storage&Stability:

Store at 4 °C short term. Aliquot and store at -20 °C long term. Avoid freeze-thaw cycles.

### Specificity:

CD161 polyclonal antibody detects endogenous levels of CD161 protein.

### DATA:



Western blot (WB) analysis of CD161 polyclonal antibody at 1:5000 dilution

Lane1:HEK293T cell membrane lysate(30ug)

Lane2:MCF-7 cell membrane lysate(30ug)

Lane3:CT-26 whole cell lysate(30ug)

Lane4:PC12 whole cell lysate(30ug)

### Note:

For research use only, not for use in diagnostic procedure.