

## CD172b polyclonal antibody

Catalog: BCP00406

Host: Rabbit

Reactivity: Human,Rat,Mouse

### BackGround:

Immunoglobulin-like cell surface receptor involved in the negative regulation of receptor tyrosine kinase-coupled signaling processes. Participates also in the recruitment of tyrosine kinase SYK. Triggers activation of myeloid cells when associated with TYROBP.

### Product:

Rabbit IgG, 1mg/ml in PBS with 0.02% sodium azide, 50% glycerol, pH7.2.

### Molecular Weight:

~ 48 kDa

### Swiss-Prot:

O00241

### Purification&Purity:

The antibody was affinity-purified from rabbit antiserum by affinity-chromatography using epitope-specific immunogen and the purity is > 95% (by SDS-PAGE).

### Applications:

WB: 1:1000~1:2000

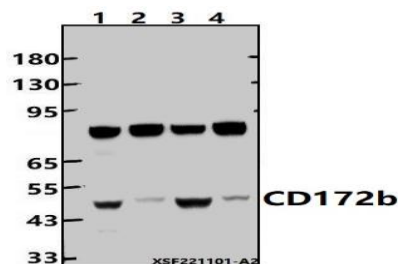
### Storage&Stability:

Store at 4 °C short term. Aliquot and store at -20 °C long term. Avoid freeze-thaw cycles.

### Specificity:

CD172b polyclonal antibody detects endogenous levels of CD172b protein.

### DATA:



Western blot (WB) analysis of CD172b polyclonal antibody at 1:1000 dilution

Lane1:A549 whole cell lysate(30ug)

Lane2:Hela whole cell lysate(30ug)

Lane3:CT-26 whole cell lysate(30ug)

Lane4:PC12 whole cell lysate(30ug)

### Note:

For research use only, not for use in diagnostic procedure.