

CD180 polyclonal antibody

Catalog: BCP00408

Host: Rabbit

Reactivity: Human

BackGround:

May cooperate with MD-1 and TLR4 to mediate the innate immune response to bacterial lipopolysaccharide (LPS) in B-cells. Leads to NF-kappa-B activation. Also involved in the life/death decision of B-cells (By similarity).

By similarity

Product:

Rabbit IgG, 1mg/ml in PBS with 0.02% sodium azide, 50% glycerol, pH7.2.

Molecular Weight:

~90 kDa

Swiss-Prot:

Q99467

Purification&Purity:

The antibody was affinity-purified from rabbit antiserum by affinity-chromatography using epitope-specific immunogen and the purity is > 95% (by SDS-PAGE).

Applications:

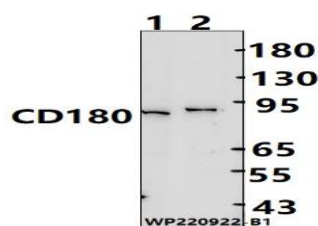
WB: 1:1000~1:2000

Storage&Stability:

Store at 4 °C short term. Aliquot and store at -20 °C long term. Avoid freeze-thaw cycles.

Specificity:

CD180 polyclonal antibody detects endogenous levels of CD180 protein.

DATA:

Western blot (WB) analysis of CD180 polyclonal antibody at 1:1000 dilution

Lane1:A549 cell membrane lysate(25ug)

Lane2:EC9706 cell membrane lysate(25ug)

Note:

For research use only, not for use in diagnostic procedure.