

CD1A polyclonal antibody

Catalog: BCP00409

Host: Rabbit

Reactivity: Human

BackGround:

Antigen-presenting protein that binds self and non-self lipid and glycolipid antigens and presents them to T-cell receptors on natural killer T-cells.

Product:

Rabbit IgG, 1mg/ml in PBS with 0.02% sodium azide, 50% glycerol, pH7.2.

Molecular Weight:

~ 45 kDa

Swiss-Prot:

P06126

Purification&Purity:

The antibody was affinity-purified from rabbit antiserum by affinity-chromatography using epitope-specific immunogen and the purity is > 95% (by SDS-PAGE).

Applications:

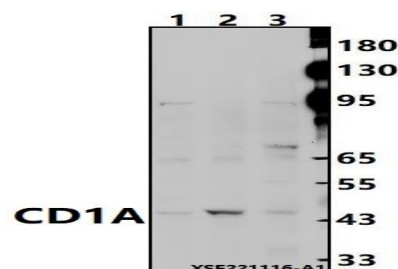
WB: 1:10000~1:20000

Storage&Stability:

Store at 4 °C short term. Aliquot and store at -20 °C long term. Avoid freeze-thaw cycles.

Specificity:

CD1A polyclonal antibody detects endogenous levels of CD1A protein.

DATA:

Western blot (WB) analysis of CD1A polyclonal antibody at 1:10000 dilution

Lane1:MCF-7 cell membrane lysate(24ug)

Lane2:L02 cell membrane lysate(24ug)

Lane3:A549 whole cell lysate(30ug)

Note:

For research use only, not for use in diagnostic procedure.