

CD1B polyclonal antibody

Catalog: BCP00410

Host: Rabbit

Reactivity: Human

BackGround:

Antigen-presenting protein that binds self and non-self lipid and glycolipid antigens and presents them to T-cell receptors on natural killer T-cells.

Product:

Rabbit IgG, 1mg/ml in PBS with 0.02% sodium azide, 50% glycerol, pH7.2.

Molecular Weight:

~ 44 kDa

Swiss-Prot:

P29016

Purification&Purity:

The antibody was affinity-purified from rabbit antiserum by affinity-chromatography using epitope-specific immunogen and the purity is > 95% (by SDS-PAGE).

Applications:

WB: 1:2000~1:5000

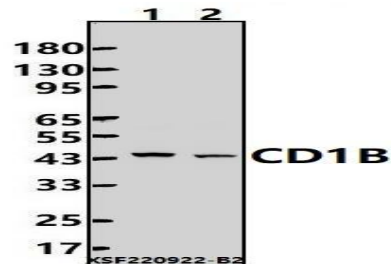
Storage&Stability:

Store at 4 °C short term. Aliquot and store at -20 °C long term. Avoid freeze-thaw cycles.

Specificity:

CD1B polyclonal antibody detects endogenous levels of CD1B protein.

DATA:



Western blot (WB) analysis of CD1B polyclonal antibody at 1:2000 dilution

Lane1:A549 cell membrane lysate(24ug)

Lane2:SGC7901 cell membrane lysate(24ug)

Note:

For research use only, not for use in diagnostic procedure.