

## CD1C polyclonal antibody

Catalog: BCP00411

Host: Rabbit

Reactivity: Human,Rat

**BackGround:**

Antigen-presenting protein that binds self and non-self lipid and glycolipid antigens and presents them to T-cell receptors on natural killer T-cells.

**Product:**

Rabbit IgG, 1mg/ml in PBS with 0.02% sodium azide, 50% glycerol, pH7.2.

**Molecular Weight:**

~ 36 kDa

**Swiss-Prot:**

P29017

**Purification&Purity:**

The antibody was affinity-purified from rabbit antiserum by affinity-chromatography using epitope-specific immunogen and the purity is > 95% (by SDS-PAGE).

**Applications:**

WB: 1:1000~1:2000

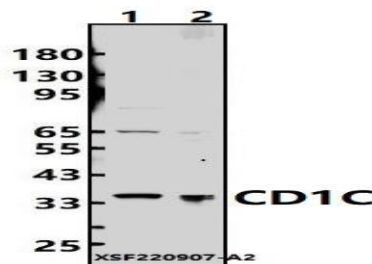
IP 1:50 - 1:200

**Storage&Stability:**

Store at 4 °C short term. Aliquot and store at -20 °C long term. Avoid freeze-thaw cycles.

**Specificity:**

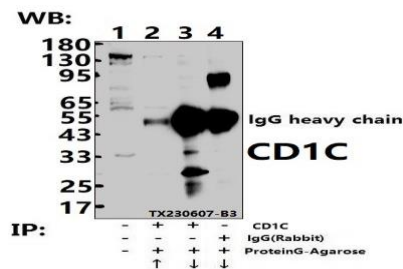
CD1C polyclonal antibody detects endogenous levels of CD1C protein.

**DATA:**

Western blot (WB) analysis of CD1C polyclonal antibody at 1:1000 dilution

Lane1:MCF-7 cell membrane lysate(24ug)

Lane2:C6 cell membrane lysate(24ug)



Immunoprecipitation of C6 cell membrane lysates using CD1C pAb (Sepharose Bead Conjugate)#BD0048 (lane 2 and lane 3) and Nonspecific IgG Control (Sepharose Bead Conjugate)#BD0048 (lane 4). Lane 1 is 30% input. The western blot was probed using CD1C pAb.

**Note:**

For research use only, not for use in diagnostic procedure.