

## CD212 polyclonal antibody

Catalog: BCP00414

Host: Rabbit

Reactivity: Human

### BackGround:

Functions as an interleukin receptor which binds interleukin-12 with low affinity and is involved in IL12 transduction. Associated with IL12RB2 it forms a functional, high affinity receptor for IL12. Associates also with IL23R to form the interleukin-23 receptor which functions in IL23 signal transduction probably through activation of the Jak-Stat signaling cascade.

### Product:

Rabbit IgG, 1mg/ml in PBS with 0.02% sodium azide, 50% glycerol, pH7.2.

### Molecular Weight:

~ 80 kDa

### Swiss-Prot:

P42701

### Purification&Purity:

The antibody was affinity-purified from rabbit antiserum by affinity-chromatography using epitope-specific immunogen and the purity is > 95% (by SDS-PAGE).

### Applications:

WB: 1:1000~1:2000

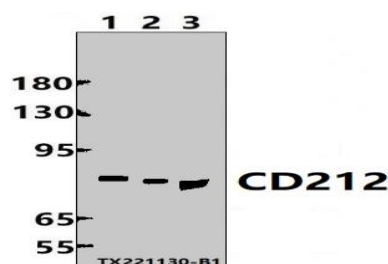
### Storage&Stability:

Store at 4 °C short term. Aliquot and store at -20 °C long term. Avoid freeze-thaw cycles.

### Specificity:

CD212 polyclonal antibody detects endogenous levels of CD212 protein.

### DATA:



Western blot (WB) analysis of CD212 polyclonal antibody at 1:1000 dilution

Lane1:MCF-7 whole cell lysate(30ug)

Lane2:EC9706 whole cell lysate(30ug)

Lane3:K562 whole cell lysate(30ug)

### Note:

For research use only, not for use in diagnostic procedure.