

## CD30 (Q21) polyclonal antibody

Catalog: BCP00422

Host: Rabbit

Reactivity: Human,Mouse,Rat

### BackGround:

The tumor necrosis factor (TNF) receptor family is composed of several type I integral membrane glycoproteins that exhibit homology in their cysteine-rich extracellular domains. Members of this family include FAS, OX40, CD27 and CD30. CD30 is a surface marker for neoplastic cells of the Hodgkin's lymphoma and related hematologic malignancies.

### Product:

Rabbit IgG, 1mg/ml in PBS with 0.02% sodium azide, 50% glycerol, pH7.2

### Molecular Weight:

~ 120 kDa

### Swiss-Prot:

P28908

### Purification&Purity:

The antibody was affinity-purified from rabbit antiserum by affinity-chromatography using epitope-specific immunogen and the purity is > 96% (by SDS-PAGE).

### Applications:

WB: 1:500~1:1000

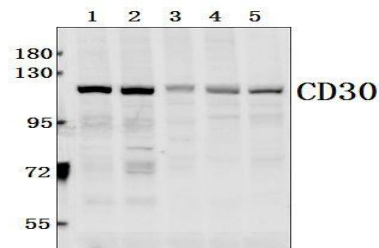
### Storage&Stability:

Store at 4 °C short term. Aliquot and store at -20 °C long term. Avoid freeze-thaw cycles.

### Specificity:

CD30 (Q21) polyclonal antibody detects endogenous levels of CD30 protein.

### DATA:



Western blot (WB) analysis of CD30 (Q21) polyclonal antibody at 1:500 dilution

Lane1:MCF-7 whole cell lysate(40ug)

Lane2:HEK293T whole cell lysate(40ug)

Lane3:PC12 whole cell lysate(40ug)

Lane4:BV2 whole cell lysate(40ug)

Lane5:The Kidney tissue lysate of Mouse(40ug)

### Note:

For research use only, not for use in diagnostic procedure.