

**CD31/PECAM-1 (T709) polyclonal antibody**

Catalog: BCP00425

Host: Rabbit

Reactivity: Human, Mouse, Rat

**BackGround:**

CD31 (Platelet Endothelial Cell Adhesion Molecule-1: PECAM-1), a member of the Ig superfamily of cell adhesion molecules, is expressed by circulating platelets, monocytes, neutrophils, some T cells and endothelial cells, and modulates cell adhesion, endothelial cell migration and angiogenesis. CD31 is phosphorylated on Tyr686 at the cytoplasmic carboxy-terminal tail upon various stimuli (e.g. mechanical stress or oxidative stress), presumably by Src family members. The tyrosine phosphorylation mediates associations with a number of SH2 domain containing binding partners such as PI3-kinase, SHIP, PLC $\gamma$  and SHP-2. Thus, CD31 serves as a scaffold for various signaling molecules.

**Product:**

Rabbit IgG, 1mg/ml in PBS with 0.02% sodium azide, 50% glycerol, pH7.2

**Molecular Weight:**

~ 140 kDa

**Swiss-Prot:**

P16284

**Purification&Purity:**

The antibody was affinity-purified from rabbit antiserum by affinity-chromatography using epitope-specific immunogen and the purity is > 95% (by SDS-PAGE).

**Applications:**

WB: 1:500~1:1000

IHC: 1:50~1:200

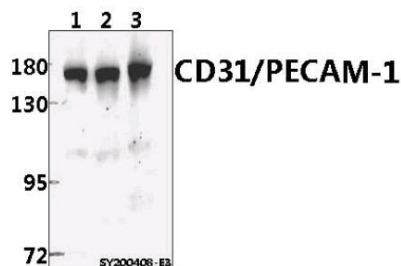
IF: 1:50~1:200

**Storage&Stability:**

Store at 4 °C short term. Aliquot and store at -20 °C long term. Avoid freeze-thaw cycles.

**Specificity:**

CD31/PECAM-1 (T709) polyclonal antibody detects endogenous levels of CD31 protein.

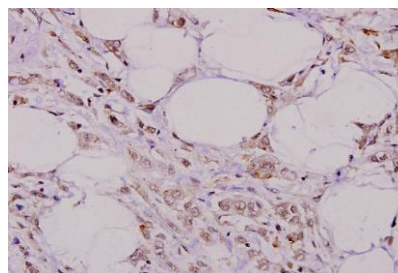
**DATA:**

Western blot (WB) analysis of CD31/PECAM-1 (T709) pAb at 1:500 dilution

Lane1:A549 whole cell lysate(30ug)

Lane2:Raw264.7 whole cell lysate(40ug)

Lane3:C6 whole cell lysate(40ug)



Immunohistochemistry (IHC) analyzes of CD31/PECAM-1 (T709) pAb in paraffin-embedded human breast carcinoma tissue at 1:100.

**Note:**

For research use only, not for use in diagnostic procedure.