

## CD34 polyclonal antibody

Catalog: BCP00434

Host: Rabbit

Reactivity: Human

### BackGround:

Possible adhesion molecule with a role in early hematopoiesis by mediating the attachment of stem cells to the bone marrow extracellular matrix or directly to stromal cells. Could act as a scaffold for the attachment of lineage specific glycans, allowing stem cells to bind to lectins expressed by stromal cells or other marrow components. Presents carbohydrate ligands to selectins.

### Product:

Rabbit IgG, 1mg/ml in PBS with 0.02% sodium azide, 50% glycerol, pH7.2.

### Molecular Weight:

~ 110 kDa

### Swiss-Prot:

P28906

### Purification&Purity:

The antibody was affinity-purified from rabbit antiserum by affinity-chromatography using epitope-specific immunogen and the purity is > 95% (by SDS-PAGE).

### Applications:

WB: 1:1000~1:2000

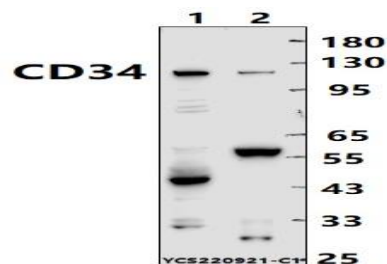
### Storage&Stability:

Store at 4 °C short term. Aliquot and store at -20 °C long term. Avoid freeze-thaw cycles.

### Specificity:

CD34 polyclonal antibody detects endogenous levels of CD34 protein.

### DATA:



Western blot (WB) analysis of CD34 polyclonal antibody at 1:1000 dilution

Lane1:A549 cell membrane lysate(30ug)

Lane2:THP-1 whole cell lysate(30ug)

### Note:

For research use only, not for use in diagnostic procedure.