

CD351 polyclonal antibody

Catalog: BCP00435

Host: Rabbit

Reactivity: Human, Mouse

BackGround:

Functions as a receptor for the Fc fragment of IgA and IgM. Binds IgA and IgM with high affinity and mediates their endocytosis. May function in the immune response to microbes mediated by IgA and IgM.

Product:

Rabbit IgG, 1mg/ml in PBS with 0.02% sodium azide, 50% glycerol, pH7.2.

Molecular Weight:

~60 kDa

Swiss-Prot:

Q8WWV6

Purification&Purity:

The antibody was affinity-purified from rabbit antiserum by affinity-chromatography using epitope-specific immunogen and the purity is > 95% (by SDS-PAGE).

Applications:

WB: 1:5000~1:10000

Storage&Stability:

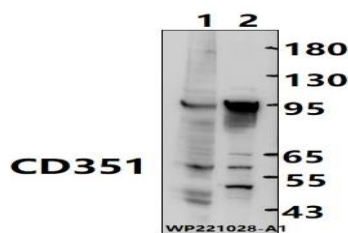
Store at 4 °C short term. Aliquot and store at -20 °C long

term. Avoid freeze-thaw cycles.

Specificity:

CD351 polyclonal antibody detects endogenous levels of CD351 protein.

DATA:



Western blot (WB) analysis of CD351 polyclonal antibody at 1:5000 dilution

Lane1:CT-26 whole cell lysate(25ug)

Lane2:MCF-7 cell membrane lysate(30ug)

Note:

For research use only, not for use in diagnostic procedure.