

**CD362 polyclonal antibody**

Catalog: BCP00440

Host: Rabbit

Reactivity: Human

**BackGround:**

Cell surface proteoglycan that bears heparan sulfate. Regulates dendritic arbor morphogenesis (By similarity).

**Product:**

Rabbit IgG, 1mg/ml in PBS with 0.02% sodium azide, 50% glycerol, pH7.2.

**Molecular Weight:**

~ 44 kDa

**Swiss-Prot:**

P34741

**Purification&Purity:**

The antibody was affinity-purified from rabbit antiserum by affinity-chromatography using epitope-specific immunogen and the purity is > 95% (by SDS-PAGE).

**Applications:**

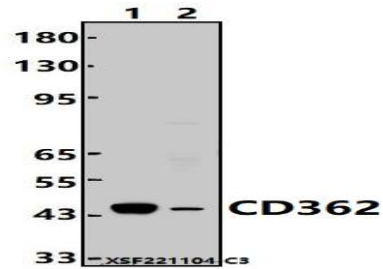
WB: 1:1000~1:2000

**Storage&Stability:**

Store at 4 °C short term. Aliquot and store at -20 °C long term. Avoid freeze-thaw cycles.

**Specificity:**

CD362 polyclonal antibody detects endogenous levels of CD362 protein.

**DATA:**

Western blot (WB) analysis of CD362 polyclonal antibody at 1:1000 dilution

Lane1:L02 cell membrane lysate(24ug)

Lane2:MCF-7 cell membrane lysate(24ug)

**Note:**

For research use only, not for use in diagnostic procedure.