

CD40 (Q259) polyclonal antibody

Catalog: BCP00446

Host: Rabbit

Reactivity: Human, Mouse, Rat

BackGround:

A receptor ligand pair central to the transmission of this signal is CD40, expressed on the surface of B cells, together with CD40L, expressed on activated T cells. In the presence of such stimulus, IL-4 and IL-13 are capable of triggering immunoglobulin class switching and secretion of IgE. B cells are sensitive to these cytokines only subsequent to CD40/CD40L-driven DNA synthesis. A downstream mediator of the CD40 signaling pathway, designated CRAF, is a member of an expanding family of proteins that contain a conserved cysteine- and histidine-rich RING finger motif. Other members of the family include TRAF1 and TRAF2. The latter proteins have been shown to regulate TNF-R2 as well as CD40 signaling through activation of the NFκB family of transcription factors.

Product:

Rabbit IgG, 1mg/ml in PBS with 0.02% sodium azide, 50% glycerol, pH7.2

Molecular Weight:

~ 30 kDa

Swiss-Prot:

P25942

Purification&Purity:

The antibody was affinity-purified from rabbit antiserum by affinity-chromatography using epitope-specific immunogen and the purity is > 95% (by SDS-PAGE).

Applications:

WB: 1:500~1:1000

IHC: 1:50~1:200

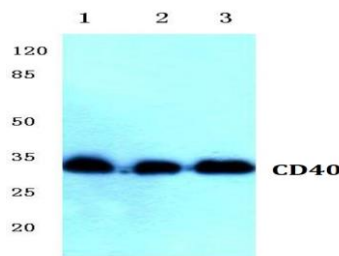
Storage&Stability:

Store at 4 °C short term. Aliquot and store at -20 °C long term. Avoid freeze-thaw cycles.

Specificity:

CD40 (Q259) polyclonal antibody detects endogenous levels of CD40 protein.

DATA:



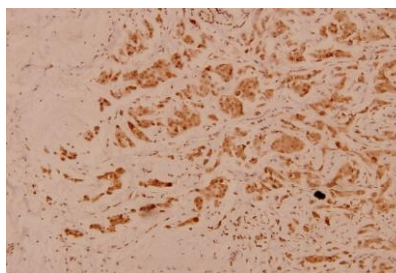
Western blot (WB) analysis of CD40 (Q259) pAb at 1:500 dilution

Lane1:C6 whole cell lysate(40ug)

Lane2:AML-12 whole cell lysate(40ug)

Lane3:HepG2 whole cell lysate(40ug)

Lane4:U-87MG whole cell lysate(40ug)



Immunohistochemistry (IHC) analyzes of CD40 (Q259) pAb in paraffin-embedded human breast carcinoma tissue at 1:100.

Note:

For research use only, not for use in diagnostic procedure.