

CD6 polyclonal antibody

Catalog: BCP00453

Host: Rabbit

Reactivity: Rat,Mouse,Human

BackGround:

Cell adhesion molecule that mediates cell-cell contacts and regulates T-cell responses via its interaction with ALCAM/CD166. Contributes to signaling cascades triggered by activation of the TCR/CD3 complex. Functions as costimulatory molecule; promotes T-cell activation and proliferation. Contributes to the formation and maturation of the immunological synapse. Functions as calcium-dependent pattern receptor that binds and aggregates both Gram-positive and Gram-negative bacteria. Binds both lipopolysaccharide (LPS) from Gram-negative bacteria and lipoteichoic acid from Gram-positive bacteria. LPS binding leads to the activation of signaling cascades and down-stream MAP kinases. Mediates activation of the inflammatory response and the secretion of pro-inflammatory cytokines in response to LPS.

Product:

Rabbit IgG, 1mg/ml in PBS with 0.02% sodium azide, 50% glycerol, pH7.2.

Molecular Weight:

~ 95 kDa

Swiss-Prot:

P30203

Purification&Purity:

The antibody was affinity-purified from rabbit antiserum by affinity-chromatography using epitope-specific immunogen and the purity is > 95% (by SDS-PAGE).

Applications:

WB: 1:1000~1:2000

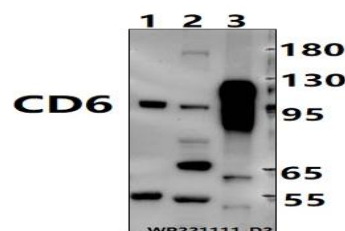
Storage&Stability:

Store at 4 °C short term. Aliquot and store at -20 °C long term. Avoid freeze-thaw cycles.

Specificity:

CD6 polyclonal antibody detects endogenous levels of CD6 protein.

DATA:



Western blot (WB) analysis of CD6 polyclonal antibody at 1:1000 dilution

Lane1: The Heart tissue lysate of Mouse(30ug)

Lane2: The Heart tissue lysate of Rat(30ug)

Lane3: HuT78 whole cell lysate(6ug)

Note:

For research use only, not for use in diagnostic procedure.