

CD68 polyclonal antibody

Catalog: BCP00455

Host: Rabbit

Reactivity: Human

BackGround:

CD68 (macrosialin) is a heavily glycosylated transmembrane protein that is expressed by and commonly used as a marker for monocytes and macrophages. It is found on the plasma membrane, as well as endosomal and lysosomal membranes. It is proposed to bind OxLDL and has been observed as a homodimer.

Product:

Rabbit IgG, 1mg/ml in PBS with 0.02% sodium azide, 50% glycerol, pH7.2.

Molecular Weight:

~ 100 kDa

Swiss-Prot:

P34810

Purification&Purity:

The antibody was affinity-purified from rabbit antiserum by affinity-chromatography using epitope-specific immunogen and the purity is > 95% (by SDS-PAGE).

Applications:

WB: 1:2000~1:5000

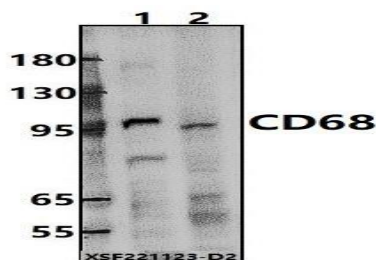
Storage&Stability:

Store at 4 °C short term. Aliquot and store at -20 °C long term. Avoid freeze-thaw cycles.

Specificity:

CD68 polyclonal antibody detects endogenous levels of CD68 protein.

DATA:



Western blot (WB) analysis of CD68 polyclonal antibody at 1:5000 dilution

Lane1:L02 cell membrane lysate(24ug)

Lane2:A549 whole cell lysate(30ug)

Note:

For research use only, not for use in diagnostic procedure.