

## CD89 polyclonal antibody

Catalog: BCP00462

Host: Rabbit

Reactivity: Human,Rat,Mouse

**BackGround:**

Binds to the Fc region of immunoglobulins alpha. Mediates several functions including cytokine production.

**Product:**

Rabbit IgG, 1mg/ml in PBS with 0.02% sodium azide, 50% glycerol, pH7.2.

**Molecular Weight:**

~ 70 kDa

**Swiss-Prot:**

P24071

**Purification&Purity:**

The antibody was affinity-purified from rabbit antiserum by affinity-chromatography using epitope-specific immunogen and the purity is > 95% (by SDS-PAGE).

**Applications:**

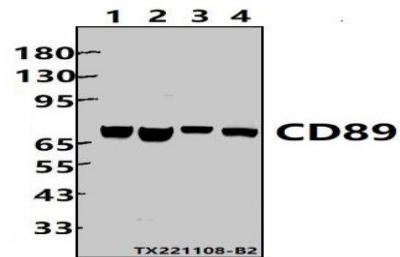
WB: 1:2000~1:5000

**Storage&Stability:**

Store at 4 °C short term. Aliquot and store at -20 °C long term. Avoid freeze-thaw cycles.

**Specificity:**

CD89 polyclonal antibody detects endogenous levels of CD89 protein.

**DATA:**

Western blot (WB) analysis of CD89 polyclonal antibody at 1:2000 dilution

Lane1:L02 whole cell lysate(30ug)

Lane2:A549 whole cell lysate(30ug)

Lane3:SP2/0 cell membrane lysate(24ug)

Lane4:PMVEC whole cell lysate(30ug)

**Note:**

For research use only, not for use in diagnostic procedure.