

Cdc37L1 (D153) polyclonal antibody

Catalog: BCP00472

Host: Rabbit

Reactivity: Human

BackGround:

CDC37L1 is a cytoplasmic phosphoprotein that exists in complex with HSP90 (HSPCA; MIM 140571) as well as several other proteins involved in HSP90-mediated protein folding (Scholz et al., 2001 [PubMed 11413142]).

Product:

Rabbit IgG, 1mg/ml in PBS with 0.02% sodium azide, 50% glycerol, pH7.2

Molecular Weight:

~ 39 kDa

Swiss-Prot:

Q7L3B6

Purification&Purity:

The antibody was affinity-purified from rabbit antiserum by affinity-chromatography using epitope-specific immunogen and the purity is > 95% (by SDS-PAGE).

Applications:

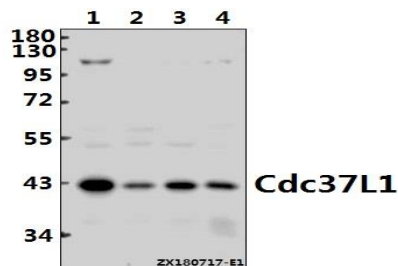
WB: 1:500~1:1000

Storage&Stability:

Store at 4 °C short term. Aliquot and store at -20 °C long term. Avoid freeze-thaw cycles.

Specificity:

Cdc37L1 (D153) polyclonal antibody detects endogenous levels of Cdc37L1 protein.

DATA:

Western blot (WB) analysis of Cdc37L1 (D153) polyclonal antibody at 1:500 dilution

Lane1:HEK293T whole cell lysate(40ug)

Lane2:L02 whole cell lysate(40ug)

Lane3:A549 whole cell lysate(20ug)

Lane4:EC9706 whole cell lysate(20ug)

Note:

For research use only, not for use in diagnostic procedure.