

CEP135 (H1117) polyclonal antibody

Catalog: BCP00486

Host: Rabbit

Reactivity: Human,Rat

BackGround:

This gene encodes a centrosomal protein, which acts as a scaffolding protein during early centriole biogenesis, and is also required for centriole-centriole cohesion during interphase. Mutations in this gene are associated with autosomal recessive primary microcephaly-8.

Product:

Rabbit IgG, 1mg/ml in PBS with 0.02% sodium azide, 50% glycerol, pH7.2

Molecular Weight:

~ 135 kDa

Swiss-Prot:

Q66GS9

Purification&Purity:

The antibody was affinity-purified from rabbit antiserum by affinity-chromatography using epitope-specific immunogen and the purity is > 95% (by SDS-PAGE).

Applications:

WB: 1:500~1:1000

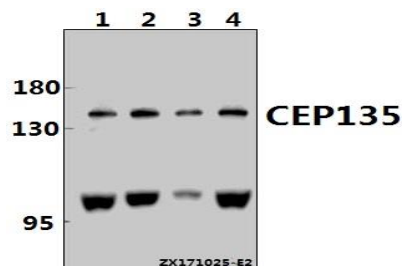
IHC: 1:50~1:200

Storage&Stability:

Store at 4 °C short term. Aliquot and store at -20 °C long term. Avoid freeze-thaw cycles.

Specificity:

CEP135 (H1117) polyclonal antibody detects endogenous levels of CEP135 protein.

DATA:

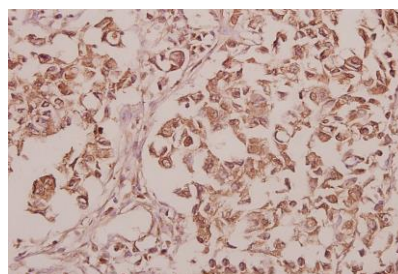
Western blot (WB) analysis of CEP135 (H1117) pAb at 1:1000 dilution

Lane1:PC12 whole cell lysate(40ug)

Lane2:A2780 whole cell lysate(40ug)

Lane3:SK-OVCAR3 whole cell lysate(40ug)

Lane4:Hela whole cell lysate(40ug)



Immunohistochemistry (IHC) analyzes of CEP135 (H1117) pAb in paraffin-embedded human colorectal carcinoma tissue at 1:50.

Note:

For research use only, not for use in diagnostic procedure.