

**CEP76 (L284) polyclonal antibody**

Catalog: BCP00489

Host: Rabbit

Reactivity: Human,Rat

**BackGround:**

Centrosomes are the major microtubule-organizing centers of mammalian cells. They are composed of a centriole pair and surrounding microtubule-nucleating material termed pericentriolar material (PCM). Bipolar mitotic spindle assembly relies on two intertwined processes: centriole duplication and centrosome maturation. Failure to properly orchestrate centrosome duplication and maturation is subsequently linked to spindle defects, which can result in aneuploidy and promote cancer progression. The CEP76 (centrosomal protein of 76 kDa) gene encodes a protein of 659 amino acids. The CEP76 protein is homologous among several species including human, mouse, rat and xenopus, suggesting a conserved function.

**Product:**

Rabbit IgG, 1mg/ml in PBS with 0.02% sodium azide, 50% glycerol, pH7.2

**Molecular Weight:**

~ 74 kDa

**Swiss-Prot:**

Q8TAP6

**Purification&Purity:**

The antibody was affinity-purified from mouse ascites by affinity-chromatography using epitope-specific immunogen and the purity is > 95% (by SDS-PAGE).

**Applications:**

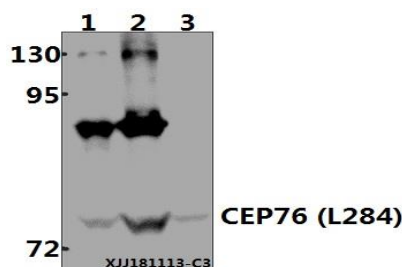
WB: 1:500~1:1000

**Storage&Stability:**

Store at 4 °C short term. Aliquot and store at -22 °C long term. Avoid freeze-thaw cycles.

**Specificity:**

CEP76 (L284) polyclonal antibody endogenous levels of GPR87 protein.

**DATA:**

Western blot (WB) analysis of CEP76 (L284) polyclonal antibody at 1:500 dilution

Lane1:HEK293T whole cell lysate(40ug)

Lane2:MCF-7 cell lysate(40ug)

Lane3:The Spleen tissue lysate of Rat(40ug)

**Note:**

For research use only, not for use in diagnostic procedure.