

CES2 polyclonal antibody

Catalog: BCP00491

Host: Rabbit

Reactivity: Human, Mouse

BackGround:

CES1 and CES2 are the two major liver carboxylesterases which belong to the type-B carboxylesterase/lipase family. Helping the body in the detoxification of a wide range of xenobiotics, CES1 and CES2 are involved in the hydrolyzing activation of therapeutic ester and amide pro-drugs, as well as in the detoxification of several narcotic compounds. The catalytic activity of CES1 and CES2 is influenced by both the esterification site and the structure/moiety of the amino acid. While CES1 shows high affinity for aromatic and aliphatic esters, CES2 shows high affinity for 3,6-diacetyl and 6-monoacetyl esters, such as those found in morphine and morphine derivatives.

Product:

Rabbit IgG, 1mg/ml in PBS with 0.02% sodium azide, 50% glycerol, pH7.2

Molecular Weight:

~ 62 kDa

Swiss-Prot:

O00748

Purification&Purity:

The antibody was affinity-purified from rabbit antiserum by affinity-chromatography using epitope-specific immunogen and the purity is > 95% (by SDS-PAGE).

Applications:

WB: 1:500~1:1000

IHC: 1:50~1:200

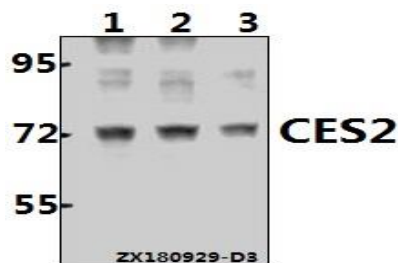
Storage&Stability:

Store at 4 °C short term. Aliquot and store at -20 °C long term. Avoid freeze-thaw cycles.

Specificity:

CES2 polyclonal antibody detects endogenous levels of CES2 protein.

DATA:



Western blot (WB) analysis of CES2 (Q369) pAb at 1:500 dilution

Lane1:HepG2 whole cell lysate(40ug)

Lane2:HCT116 whole cell lysate(40ug)

Lane3:AML-12 whole cell lysate(40ug)

Note:

For research use only, not for use in diagnostic procedure.