

c-Fos (phospho-S362) polyclonal antibody

Catalog: BCP00492

Host: Rabbit

Reactivity: Human, Mouse, Rat

BackGround:

The c-Fos oncogene was initially detected in two independent murine osteosarcoma virus isolates and an avian nephroblastoma virus. The cellular homolog, c-Fos, encodes a nuclear phospho-protein that is rapidly and transiently induced by a variety of agents and functions as a transcriptional regulator for several genes. In contrast to c-Jun proteins, which form homo- and heterodimers which bind to specific DNA response elements, c-Fos proteins are only active as heterodimers with members of the Jun gene family. Functional homologs of c-Fos include the Fra-1, Fra-2 and Fos B genes. In addition, selected ATF/CREB family members can form leucine zipper dimers with Fos and Jun. Different dimers exhibit differential specificity and affinity for AP-1 and CRE sites.

Product:

Rabbit IgG, 1mg/ml in PBS with 0.02% sodium azide, 50% glycerol, pH7.2

Molecular Weight:

~ 62 kDa

Swiss-Prot:

P01100

Purification&Purity:

The antibody was affinity-purified from rabbit antiserum by affinity-chromatography using epitope-specific immunogen and the purity is > 95% (by SDS-PAGE).

Applications:

WB: 1:500~1:1000

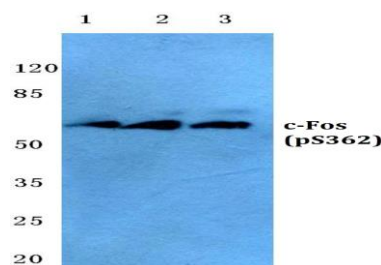
IHC: 1:50~1:200

Storage&Stability:

Store at 4 °C short term. Aliquot and store at -20 °C long term. Avoid freeze-thaw cycles.

Specificity:

p-c-Fos (S362) polyclonal antibody detects endogenous levels of c-Fos protein only when phosphorylated at Ser362

DATA:

Western blot (WB) analysis of p-c-Fos (S362) pAb at 1:500 dilution

Lane1:HCT116 whole cell lysate(40ug)

Lane2:Panc1 whole cell lysate(40ug)

Lane3:The Brain tissue lysate of Mouse(40ug)

Lane4:The Brain tissue lysate of Rat(40ug)

Immunohistochemistry (IHC) analyzes of p-c-Fos (S362) pAb in paraffin-embedded human thyroid gland tissue.

Note:

For research use only, not for use in diagnostic procedure.