

Chk1 (K274) polyclonal antibody

Catalog: BCP00493

Host: Rabbit

Reactivity: Human, Mouse, Rat

BackGround:

Cell cycle events are regulated by the sequential activation and deactivation of cyclin dependent kinases (Cdks) and by proteolysis of cyclins. Chk1 and Chk2 are involved in these processes as regulators of Cdks. Chk1 and Chk2 both function as essential components in the G2 DNA damage checkpoint by phosphorylating Cdc25C in response to DNA damage. Phosphorylation inhibits Cdc25C activity, thereby blocking mitosis. Cdc25A, Cdc25B and Cdc25C protein tyrosine phosphatases function as mitotic activators by dephosphorylating Cdc2 p34 on regulatory tyrosine residues. It has also been shown that Chk1 can phosphorylate Wee1 in vitro, providing evidence that the hyperphosphorylated form of Wee1, seen in cells delayed by Chk1 overexpression, is due to phosphorylation by Chk1.

Product:

Rabbit IgG, 1mg/ml in PBS with 0.02% sodium azide, 50% glycerol, pH7.2

Molecular Weight:

~ 56 kDa

Swiss-Prot:

O14757

Purification&Purity:

The antibody was affinity-purified from rabbit antiserum by affinity-chromatography using epitope-specific immunogen and the purity is > 95% (by SDS-PAGE).

Applications:

WB: 1:500~1:1000

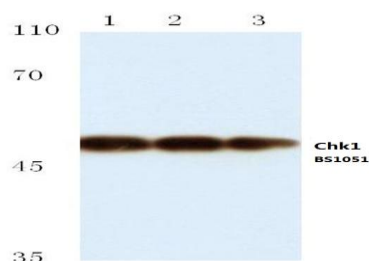
Storage&Stability:

Store at 4 °C short term. Aliquot and store at -20 °C long term. Avoid freeze-thaw cycles.

Specificity:

Chk1 (K274) polyclonal antibody detects endogenous levels of Chk1 protein.

DATA:



Western blot (WB) analysis of Chk1 (K274) polyclonal antibody at 1:500 dilution

Lane1:HepG2 whole cell lysate(40ug)

Lane2:SGC7901 whole cell lysate(40ug)

Lane3:HCT116 whole cell lysate(40ug)

Lane4:HEK293T whole cell lysate(40ug)

Lane5:A549 whole cell lysate(40ug)

Note:

For research use only, not for use in diagnostic procedure.