

CHSY2 (R671) polyclonal antibody

Catalog: BCP00496

Host: Rabbit

Reactivity: Human, Mouse, Rat

BackGround:

Chondroitin sulfate synthases (CHSYs) synthesize chondroitin sulfate, a glycosaminoglycan expressed on the surface of most cells and in extracellular matrices. Glycosaminoglycan chains are covalently linked to various of core protein families and regulate many biologic processes, including extracellular matrix deposition, cell proliferation and recognition, and morphogenesis. The CHSY family includes CHSY1, CHSY2 and CHSY3. CHSY1 and CHSY3 display both glucuronyltransferase and N-acetylgalactosaminyltransferase activities, while CHSY2 is required for chondroitin polymerizing activity. CHSY2 localizes to the Golgi apparatus and is expressed ubiquitously, with highest expression observed in pancreas, ovary, brain, heart, skeletal muscle, colon, kidney, liver, stomach, small intestine and placenta.

Product:

Rabbit IgG, 1mg/ml in PBS with 0.02% sodium azide, 50% glycerol, pH7.2

Molecular Weight:

~ 85 kDa

Swiss-Prot:

Q8IZ52

Purification&Purity:

The antibody was affinity-purified from rabbit antiserum by affinity-chromatography using epitope-specific immunogen and the purity is > 95% (by SDS-PAGE).

Applications:

WB: 1:500~1:1000

IHC: 1:50~1:200

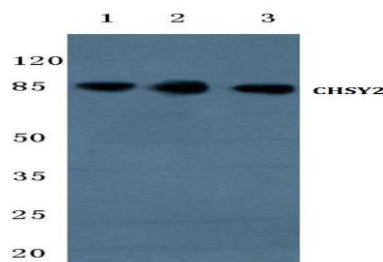
IF: 1:50~1:200

Storage&Stability:

Store at 4 °C short term. Aliquot and store at -20 °C long term. Avoid freeze-thaw cycles.

Specificity:

CHSY2 (R671) polyclonal antibody detects endogenous levels of CHSY2 protein.

DATA:

Western blot (WB) analysis of CHSY2 (R671) pAb at 1:500 dilution

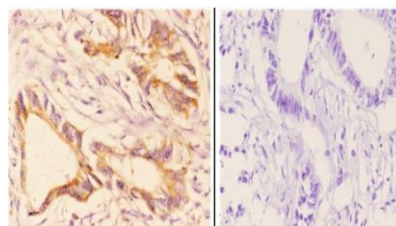
Lane1:PC12 whole cell lysate(40ug)

Lane2:AML-12 whole cell lysate(40ug)

Lane3:HEK293T whole cell lysate(40ug)

Lane4:L02 whole cell lysate(40ug)

Lane5:A2780 whole cell lysate(40ug)



Immunohistochemistry (IHC) analyzes of CHSY2 (R671) pAb in paraffin-embedded human rectum carcinoma tissue at 1:50. showing moderate cytoplasmic and membranous staining. Negative control (the right) Using PBS instead of primary antibody, secondary antibody is Goat Anti-Rabbit IgG-biotin followed by avidin-peroxidase.

Note:

For research use only, not for use in diagnostic procedure.