

**c-Jun (Ab-91) polyclonal antibody**

Catalog: BCP00500

Host: Rabbit

Reactivity: Human

**BackGround:**

c-Jun is a member of the Jun family containing c-Jun, JunB, and JunD, and is a component of the transcription factor activator protein-1 (AP-1). AP-1 is composed of dimers of Fos, Jun, and ATF family members and binds to and activates transcription at TRE/AP-1 elements. Extracellular signals including growth factors, chemokines, and stress activate AP-1-dependent transcription. The transcriptional activity of c-Jun is regulated by phosphorylation at Ser63 and Ser73 through SAPK/JNK. Knock-out studies in mice have shown that c-Jun is essential for embryogenesis, and subsequent studies have demonstrated roles for c-Jun in various tissues and developmental processes including axon regeneration, liver regeneration, and T cell development. AP-1 regulated genes exert diverse biological functions including cell proliferation, differentiation, and apoptosis, as well as transformation, invasion and metastasis, depending on cell type and context. Other target genes regulate survival, as well as hypoxia and angiogenesis. Research studies have implicated c-Jun as a promising therapeutic target for cancer, vascular remodeling, acute inflammation, and rheumatoid arthritis.

**Product:**

Rabbit IgG, 1mg/ml in PBS with 0.02% sodium azide, 50% glycerol, pH7.2

**Molecular Weight:**

~ 42 kDa

**Swiss-Prot:**

P05412

**Purification&Purity:**

The antibody was affinity-purified from rabbit antiserum

by affinity-chromatography using epitope-specific immunogen and the purity is > 95% (by SDS-PAGE).

**Applications:**

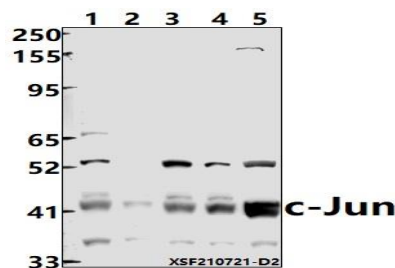
WB: 1:500~1:1000

**Storage&Stability:**

Store at 4 °C short term. Aliquot and store at -20 °C long term. Avoid freeze-thaw cycles.

**Specificity:**

c-Jun (Ab-91) polyclonal antibody detects endogenous levels of c-Jun protein.

**DATA:**

Western blot (WB) analysis of c-Jun (Ab-91) polyclonal antibody at 1:500 dilution

Lane1:HepG2 whole cell lysate(40ug)

Lane2:EC9706 whole cell lysate(40ug)

Lane3:HCT116 whole cell lysate(40ug)

Lane4:HEK293T whole cell lysate(40ug)

Lane5:U-87MG whole cell lysate(40ug)

**Note:**

For research use only, not for use in diagnostic procedure.