

## Claudin-4 (P192) polyclonal antibody

Catalog: BCP00507

Host: Rabbit

Reactivity: Human, Mouse, Rat

### BackGround:

The Claudin superfamily consists of many structurally related proteins in humans. These proteins are important structural and functional components of tight junctions in paracellular transport. Claudins are located in both epithelial and endothelial cells in all tight junction-bearing tissues. Three classes of proteins are known to localize to tight junctions, including the Claudins, Occludin and junction adhesion molecule (JAM). Claudins, which consist of four transmembrane domains and two extracellular loops, make up tight junction strands. Claudin expression is highly restricted to specific regions of different tissues and variations of Claudin expression may have an important role in transcellular transport through tight junctions. In rat liver, claudin-3 is uniformly expressed, whereas in the pancreas, claudin-3 is expressed in junctions of the duct epithelia and junctions of acinar cells. Claudin-3 binds the peptide toxin Clostridium perfringens enterotoxin (CPE) at the cell surface via the second extracellular loop of claudin-3. The gene encoding human claudin-3 maps to chromosome 7q11.23.

### Product:

Rabbit IgG, 1mg/ml in PBS with 0.02% sodium azide, 50% glycerol, pH7.2

### Molecular Weight:

~ 22 kDa

### Swiss-Prot:

O14493

### Purification&Purity:

The antibody was affinity-purified from rabbit antiserum by affinity-chromatography using epitope-specific immunogen and the purity is > 95% (by SDS-PAGE).

### Applications:

WB: 1:500~1:1000

IHC/IF: 1:50~1:200

IP: 1:50~1:200

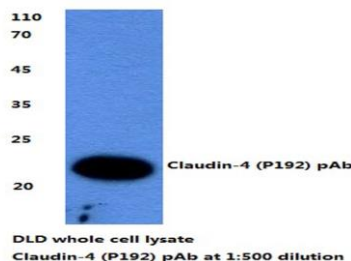
### Storage&Stability:

Store at 4 °C short term. Aliquot and store at -20 °C long term. Avoid freeze-thaw cycles.

### Specificity:

Claudin 4 (P192) polyclonal antibody detects endogenous levels of Claudin 4 protein.

### DATA:

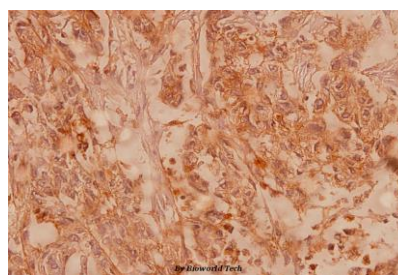


Western blot (WB) analysis of Claudin-4 (P192) polyclonal antibody at 1:500 dilution

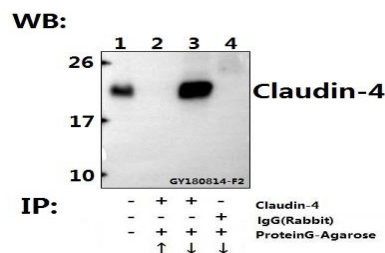
Lane1:A549 whole cell lysate(40ug)

Lane2:HCT116 whole cell lysate(40ug)

Lane3:DLD whole cell lysate(40ug)



Immunohistochemistry (IHC) analyzes of Claudin-4 (P192) pAb in par-affin-embedded human breast carcinoma tissue at 1:100.



Immunoprecipitation of HCT116 cell lysate using Claudin-4 (P192) pAb (Sepharose Bead Conjugate) #BD0048(lane 2 and lane 3) and Nonspecific IgG Control (Sepharose Bead Conjugate) #BD0048 (lane 4) .Lane 1 is 30% input. The western blot was probed using Claudin-4 (P192).

“ ↑ ” ( supernatant ) ; “ ↓ ” ( deposition )

### Note:

For research use only, not for use in diagnostic procedure.

