

## Cleaved-MMP-23 (Y79) polyclonal antibody

Catalog: BCP00524

Host: Rabbit

Reactivity: Human, Mouse, Rat

### BackGround:

Matrix metalloproteinases (MMPs) are highly homologous Zn<sup>2+</sup> endopeptidases involved in extracellular matrix breakdown. MMP mediated extracellular remodeling occurs in normal physiological processes, such as embryonic development, reproduction and tissue remodeling, and disease processes, including arthritis and metastasis. MMP-23 exhibits sequence similarity with most MMPs, but displays a difference in domain structure. The MMP-23 protein contains prepro-, catalytic, cysteine-rich, Interleukin-1 receptor-related and proline-rich domains. Lacking a recognizable signal sequence, MMP-23 has a short prodomain. In addition, MMP-23 contains a single cysteine residue that can be part of the cysteine-switch mechanism operation for maintaining enzyme latency. MMP-23 is a membrane-anchored glycoprotein with type II topology. Subcellular localization is predominantly perinuclear.

### Product:

Rabbit IgG, 1mg/ml in PBS with 0.02% sodium azide, 50% glycerol, pH7.2

### Molecular Weight:

~ 37, 44 kDa

### Swiss-Prot:

O75900

### Purification&Purity:

The antibody was affinity-purified from rabbit antiserum by affinity-chromatography using epitope-specific immunogen and the purity is > 95% (by SDS-PAGE).

### Applications:

WB: 1:500~1:1000

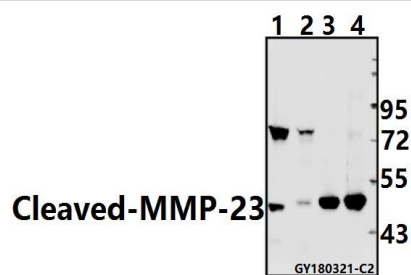
### Storage&Stability:

Store at 4 °C short term. Aliquot and store at -20 °C long term. Avoid freeze-thaw cycles.

### Specificity:

Cleaved-MMP-23 (Y79) polyclonal antibody detects endogenous levels of Cleaved-MMP-23 (37 kDa) protein.

### DATA:



Western blot (WB) analysis of Cleaved-MMP-23 (Y79) pAb at 1:500 dilution

Lane1:HEK293T whole cell lysate(40ug)

Lane2:Hela whole cell lysate(40ug)

Lane3:The Brain tissue lysate of Mouse(40ug)

Lane4:The Brain tissue lysate of Rat(40ug)

### Note:

For research use only, not for use in diagnostic procedure.