

CMTM3 (E13) polyclonal antibody

Catalog: BCP00535

Host: Rabbit

Reactivity: Human,Mouse,Rat

BackGround:

CMTM3 belongs to the chemokine-like factor gene superfamily, a novel family that is similar to the chemokine and the transmembrane 4 superfamilies of signaling molecules. This gene is one of several chemokine-like factor genes located in a cluster on chromosome 16.

Product:

Rabbit IgG, 1mg/ml in PBS with 0.02% sodium azide, 50% glycerol, pH7.2

Molecular Weight:

~ 20 kDa

Swiss-Prot:

Q96MX0

Purification&Purity:

The antibody was affinity-purified from rabbit antiserum by affinity-chromatography using epitope-specific immunogen and the purity is > 95% (by SDS-PAGE).

Applications:

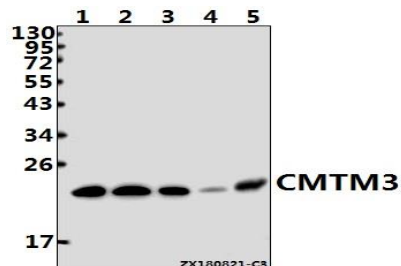
WB: 1:1000~1:2000

Storage&Stability:

Store at 4 °C short term. Aliquot and store at -20 °C long term. Avoid freeze-thaw cycles.

Specificity:

CMTM3(E13) pAb detects endogenous levels of CMTM3 protein.

DATA:

Western blot (WB) analysis of CMTM3 (E13) pAb at 1:500 dilution

Lane1:K562 whole cell lysate(40ug)

Lane2:A375 whole cell lysate(40ug)

Lane3:Hela whole cell lysate(40ug)

Lane4:The Embryo tissue lysate of Mouse(40ug)

Lane5:The Testis tissue lysate of Rat(40ug)

Note:

For research use only, not for use in diagnostic procedure.