

**CNGA1 polyclonal antibody**

Catalog: BCP00536

Host: Rabbit

Reactivity: Human,Mouse,Rat

**BackGround:**

Visual signal transduction is mediated by a G-protein coupled cascade using cGMP as second messenger. This protein can be activated by cyclic GMP which leads to an opening of the cation channel and thereby causing a depolarization of rod photoreceptors.

**Product:**

Rabbit IgG, 1mg/ml in PBS with 0.02% sodium azide, 50% glycerol, pH7.2

**Molecular Weight:**

~ 79 kDa

**Swiss-Prot:**

P29973

**Purification&Purity:**

The antibody was affinity-purified from rabbit antiserum by affinity-chromatography using epitope-specific immunogen and the purity is > 95% (by SDS-PAGE).

**Applications:**

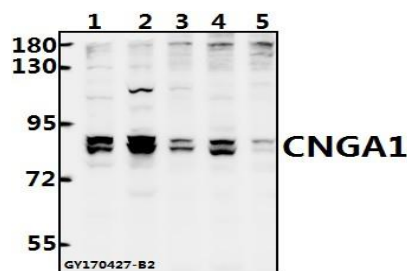
WB: 1:500~1:1000

**Storage&Stability:**

Store at 4 °C short term. Aliquot and store at -20 °C long term. Avoid freeze-thaw cycles.

**Specificity:**

CNGA1 polyclonal antibody detects endogenous levels of CNGA1 protein.

**DATA:**

Western blot (WB) analysis of CNGA1 polyclonal antibody at 1:500 dilution

Lane1:CT26 whole cell lysate(40ug)

Lane2:PC12 whole cell lysate(40ug)

Lane3:A549 whole cell lysate(40ug)

Lane4:MCF-7 whole cell lysate(40ug)

Lane5:L02 whole cell lysate(40ug)

**Note:**

For research use only, not for use in diagnostic procedure.