

COL4A2 (P175) polyclonal antibody

Catalog: BCP00542

Host: Rabbit

Reactivity: Human,Mouse,Rat

BackGround:

The extensive family of COL gene products (collagens) is composed of several chain types, including fibril-forming interstitial collagens (Types I, II, III and V) and basement membrane collagens (Type IV), each type containing multiple isoforms. Collagens are fibrous, extracellular matrix proteins with high tensile strength and are the major components of connective tissue, such as tendons and cartilage. All collagens contain a triple helix domain and frequently show lateral self-association in order to form complex connective tissues. Several collagens also play a role in cell adhesion, important for maintaining normal tissue architecture and function.

Product:

Rabbit IgG, 1mg/ml in PBS with 0.02% sodium azide, 50% glycerol, pH7.2

Molecular Weight:

~ 150 kDa

Swiss-Prot:

P08572

Purification&Purity:

The antibody was affinity-purified from rabbit antiserum by affinity-chromatography using epitope-specific immunogen and the purity is > 95% (by SDS-PAGE).

Applications:

WB: 1:500~1:1000

IHC: 1:50~1:200

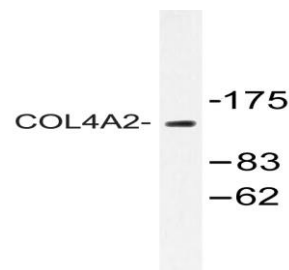
IF: 1:50~1:200

Storage&Stability:

Store at 4 °C short term. Aliquot and store at -20 °C long term. Avoid freeze-thaw cycles.

Specificity:

COL4A2 (P175) polyclonal antibody detects endogenous levels of COL4A2 protein.

DATA:

Western blot (WB) analysis of COL4A2 (P175) pAb at 1:500 dilution

Lane1:Hela whole cell lysate(40ug)

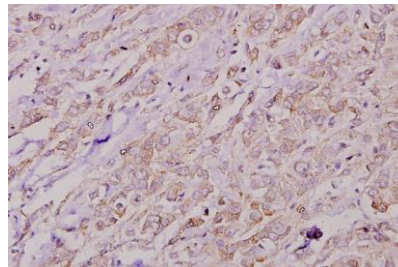
Lane2:HEK293T whole cell lysate(40ug)

Lane3:A549 whole cell lysate(40ug)

Lane4:Panc1 whole cell lysate(40ug)

Lane5:H9C2 whole cell lysate(40ug)

Lane6:CT26 whole cell lysate(40ug)



Immunohistochemistry (IHC) analyzes of COL4A2 (P175) pAb in paraffin-embedded human breast carcinoma tissue at 1:50.

Note:

For research use only, not for use in diagnostic procedure.