

**COL5A1 (E325) polyclonal antibody**

Catalog: BCP00543

Host: Rabbit

Reactivity: Human, Mouse, Rat

**BackGround:**

The extensive family of COL gene products (collagens) is composed of several chain types, including fibril-forming interstitial collagens (types I, II, III and V) and basement membrane collagens (type IV), each type containing multiple isoforms. Collagens are fibrous, extracellular matrix proteins with high tensile strength and are the major components of connective tissue, such as tendons and cartilage. All collagens contain a triple helix domain and frequently show lateral self-association in order to form complex connective tissues. Several collagens also play a role in cell adhesion, important for maintaining normal tissue architecture and function.

**Product:**

Rabbit IgG, 1mg/ml in PBS with 0.02% sodium azide, 50% glycerol, pH7.2

**Molecular Weight:**

~ 180 kDa

**Swiss-Prot:**

P20908

**Purification&Purity:**

The antibody was affinity-purified from rabbit antiserum by affinity-chromatography using epitope-specific immunogen and the purity is > 95% (by SDS-PAGE).

**Applications:**

WB: 1:500~1:1000

IHC: 1:50~1:200

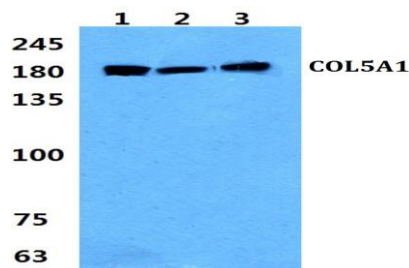
IF: 1:50~1:200

**Storage&Stability:**

Store at 4 °C short term. Aliquot and store at -20 °C long term. Avoid freeze-thaw cycles.

**Specificity:**

COL5A1 (E325) polyclonal antibody detects endogenous levels of COL5A1 protein.

**DATA:**

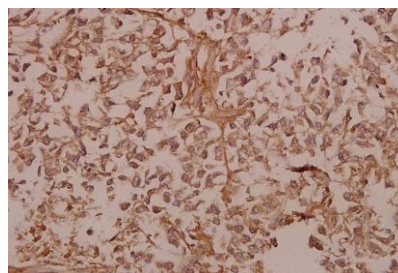
Western blot (WB) analysis of COL5A1 (E325) pAb at 1:500 dilution

Lane1:C6 whole cell lysate(40ug)

Lane2:CT26 whole cell lysate(40ug)

Lane3:U-87MG whole cell lysate(40ug)

Lane4:Hela whole cell lysate(40ug)



Immunohistochemistry (IHC) analyzes of COL5A1 (E325) pAb in paraffin-embedded human colorectal carcinoma tissue at 1:50.

**Note:**

For research use only, not for use in diagnostic procedure.