

## Cyclin B1 (phospho-S126) polyclonal antibody

Catalog: BCP00602

Host: Rabbit

Reactivity: Human

### BackGround:

In eukaryotic cells, mitosis is initiated following the activation of a protein kinase known variously as maturation-promoting factor, M-phase specific histone kinase or M-phase kinase. This protein kinase is composed of a catalytic subunit (Cdc2), a regulatory subunit (cyclin B) and a low molecular weight subunit (p13 SUC1). The Cdc/cyclin enzyme is subject to multiple levels of control of which the regulation of the catalytic subunit by tyrosine phosphorylation is the best understood. Tyrosine phosphorylation inhibits the Cdc2/cyclin B enzyme and tyrosine dephosphorylation, occurring at the onset of mitosis, directly activates the pre-MPF complex. Evidence has established that B-type cyclins not only act on M-phase regulatory subunits of the Cdc2 protein kinase, but also activate the Cdc25A and Cdc25B endogenous tyrosine phosphatase, of which Cdc2 is the physiological substrate. The specificity of this effect is shown by the inability of either cyclin A or cyclin D1 to display any such stimulation of Cdc25A or Cdc25B.

### Product:

Rabbit IgG, 1mg/ml in PBS with 0.02% sodium azide, 50% glycerol, pH7.2

### Molecular Weight:

~ 60 kDa

### Swiss-Prot:

P14635

### Purification&Purity:

The antibody was affinity-purified from rabbit antiserum by affinity-chromatography using epitope-specific immunogen and the purity is > 95% (by SDS-PAGE).

### Applications:

WB: 1:500~1:1000

IHC: 1:50~1:200

### Storage&Stability:

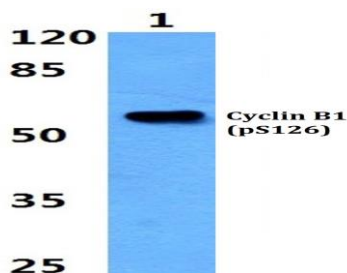
Store at 4 °C short term. Aliquot and store at -20 °C long term. Avoid freeze-thaw cycles.

### Specificity:

P-Cyclin B1 (S126) polyclonal antibody detects endoge-

nous levels of Cyclin B1 protein when phosphorylated at Ser126.

### DATA:



Western blot (WB) analysis of p-Cyclin B1 (S126) pAb at 1:500 dilution

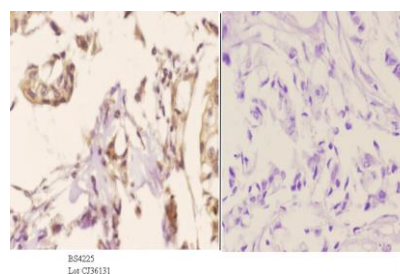
Lane1:MCF-7 whole cell lysate(40ug)

Lane2:HEK293T whole cell lysate(40ug)

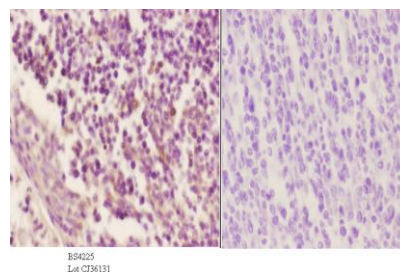
Lane3:SGC7901 whole cell lysate(40ug)

Lane4:3T3-L1 whole cell lysate(40ug)

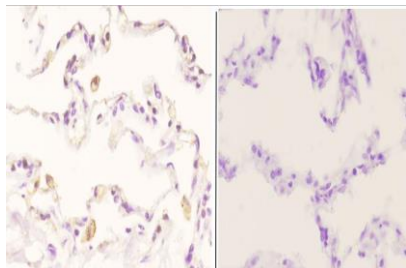
Lane5:PC12 whole cell lysate(40ug)



Immunohistochemistry (IHC) analyzes of p-Cyclin B1 (S126) pAb in paraffin-embedded human breast carcinoma tissue at 1:50. showing cytoplasmic and nucleus staining. Negative control (the right) Using PBS instead of primary antibody, secondary antibody is Goat Anti-Rabbit IgG-biotin followed by avidin-peroxidase.



Immunohistochemistry (IHC) analyzes of p-Cyclin B1 (S126) pAb in paraffin-embedded human tonsil carcinoma tissue at 1:50. showing cytoplasmic and nucleus staining. Negative control (the right) Using PBS instead of primary antibody, secondary antibody is Goat Anti-Rabbit IgG-biotin followed by avidin-peroxidase.



Immunohistochemistry (IHC) analyzes of p-Cyclin B1 (S126) pAb in paraffin-embedded human lung carcinoma tissue at 1:50. showing cytoplasmic and nucleus staining. Negative control (the right) Using PBS instead of primary antibody, secondary antibody is Goat Anti-Rabbit IgG-biotin followed by avidin-peroxidase.

**Note:**

For research use only, not for use in diagnostic procedure.