

Cyclophilin F (Y121) polyclonal antibody

Catalog: BCP00608

Host: Rabbit

Reactivity: Human, Mouse, Rat

BackGround:

Cyclophilins are conserved, ubiquitous and abundant cytosolic peptidyl-prolyl cis-trans isomerases that accelerate the isomerization of XaaPro peptide bonds and the re-folding of proteins. Cyclophilin D (CyP40) is a widely expressed cytoplasmic protein that catalyzes the cis-trans isomerization of proline imidic peptide bonds in oligopeptides. Cyclophilin F (CyP3), is also known as PPIF, Cyp-D or Rotamase F, is a 207 amino acid mitochondrial matrix protein involved in the induction of necrotic and apoptotic cell death through the activation of the mitochondrial permeability transition (mPT) pore.

Product:

Rabbit IgG, 1mg/ml in PBS with 0.02% sodium azide, 50% glycerol, pH7.2

Molecular Weight:

~ 22 kDa

Swiss-Prot:

P30405

Purification&Purity:

The antibody was affinity-purified from rabbit antiserum by affinity-chromatography using epitope-specific immunogen and the purity is > 95% (by SDS-PAGE).

Applications:

WB: 1:500~1:1000

IHC: 1:50~1:200

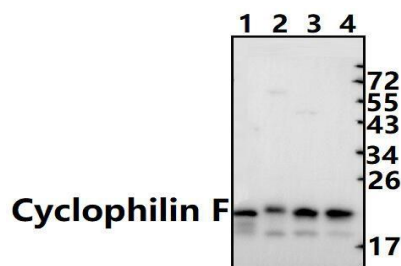
Storage&Stability:

Store at 4 °C short term. Aliquot and store at -20 °C long term. Avoid freeze-thaw cycles.

Specificity:

Cyclophilin F (Y121) polyclonal antibody detects endogenous levels of Cyclophilin F protein.

DATA:



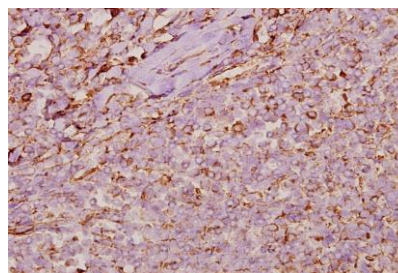
Western blot (WB) analysis of Cyclophilin F (Y121) pAb at 1:1000 dilution

Lane1: The Kidney tissue lysate of Mouse (40ug)

Lane1: The Testis tissue lysate of Rat (40ug)

Lane2: MCF-7 whole cell lysate (40ug)

Lane3: SK-OVCAR3 whole cell lysate (40ug)



Immunohistochemistry (IHC) analyzes of Cyclophilin F (Y121) pAb in paraffin-embedded human tonsil carcinoma tissue at 1:50.

Note:

For research use only, not for use in diagnostic procedure.