

## Cytokeratin 13 (E282) polyclonal antibody

Catalog: BCP00623

Host: Rabbit

Reactivity: Human, Mouse, Rat

### BackGround:

Cytokeratin 13 is a member of the keratin gene family. The keratins are intermediate filament proteins responsible for the structural integrity of epithelial cells and are subdivided into cytokeratins and hair keratins. Most of the type I cytokeratins consist of acidic proteins which are arranged in pairs of heterotypic keratin chains. This type I cytokeratin is paired with keratin 4 and expressed in the suprabasal layers of non-cornified stratified epithelia. Mutations in this gene and keratin 4 have been associated with the autosomal dominant disorder White Sponge Nevus.

### Product:

Rabbit IgG, 1mg/ml in PBS with 0.02% sodium azide, 50% glycerol, pH7.2

### Molecular Weight:

~ 50 kDa

### Swiss-Prot:

P13646

### Purification&Purity:

The antibody was affinity-purified from rabbit antiserum by affinity-chromatography using epitope-specific immunogen and the purity is > 95% (by SDS-PAGE).

### Applications:

WB: 1:500~1:1000

IHC: 1:50~1:200

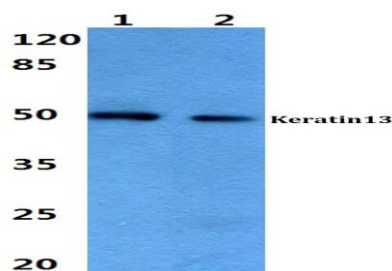
### Storage&Stability:

Store at 4 °C short term. Aliquot and store at -20 °C long term. Avoid freeze-thaw cycles.

### Specificity:

Cytokeratin 13 (E282) polyclonal antibody detects endogenous levels of Cytokeratin 13 protein.

### DATA:



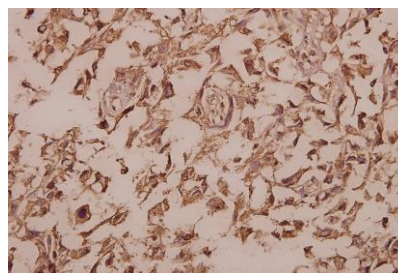
Western blot (WB) analysis of Cytokeratin 13 (E282) pAb at 1:500 dilution

Lane1:Hela whole cell lysate(40ug)

Lane2:A549 whole cell lysate(40ug)

Lane3:PC12 whole cell lysate(40ug)

Lane4:CT26 whole cell lysate(40ug)



Immunohistochemistry (IHC) analyzes of Cytokeratin 13 (E282) pAb in paraffin-embedded human colorectal carcinoma tissue at 1:50.

### Note:

For research use only, not for use in diagnostic procedure.