

Cytokeratin 8 (phospho-S432) polyclonal antibody

Catalog: BCP00631

Host: Rabbit

Reactivity: Human, Mouse

BackGround:

Keratins (cytokeratins) are intermediate filament proteins that are mainly expressed in epithelial cells. Keratin heterodimers composed of an acidic keratin (or type I keratin, keratins 9 to 23) and a basic keratin (or type II keratin, keratins 1 to 8) assemble to form filaments. Keratin isoforms demonstrate tissue and differentiation-specific profiles that make them useful as research biomarkers. Research studies have shown that mutations in keratin genes are associated with skin disorders, liver and pancreatic diseases, and inflammatory intestinal diseases.

Product:

Rabbit IgG, 1mg/ml in PBS with 0.02% sodium azide, 50% glycerol, pH7.2

Molecular Weight:

~ 55 kDa

Swiss-Prot:

P05787

Purification&Purity:

The antibody was affinity-purified from rabbit antiserum by affinity-chromatography using epitope-specific immunogen and the purity is > 95% (by SDS-PAGE).

Applications:

WB: 1:500~1:1000

Storage&Stability:

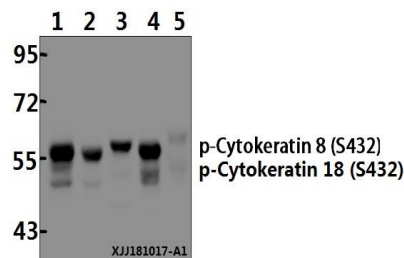
Store at 4 °C short term. Aliquot and store at -20 °C long term. Avoid freeze-thaw cycles.

Specificity:

Cytokeratin 8 (phospho-S432) polyclonal antibody detects endogenous levels of Cytokeratin 8 protein only

when phosphorylated at Ser432.

DATA:



Western blot (WB) analysis of Cytokeratin 8 (phospho-S432) polyclonal antibody at 1:500 dilution

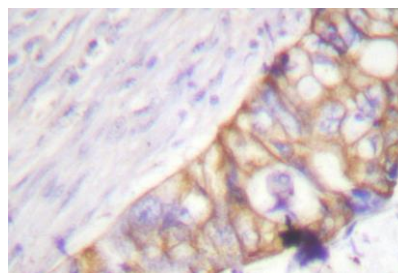
Lane1:PC3 whole cell lysate(20 µg)

Lane2:MCF-7 whole cell lysate(20 µg)

Lane3:HeLa whole cell lysate(20 µg)

Lane4:A549 whole cell lysate(20 µg)

Lane5:The Lung tissue lysate of Mouse(20 µg)



Note:

For research use only, not for use in diagnostic procedure.