

**DCLK2 (E8) polyclonal antibody**

Catalog: BCP00647

Host: Rabbit

Reactivity: Human,Mouse,Rat

**BackGround:**

Protein kinase with a significantly reduced C(a2+)/CAM affinity and dependence compared to other members of the CaMK family. May play a role in the down-regulation of CRE-dependent gene activation probably by phosphorylation of the CREB coactivator CRTC2/TORC2 and the resulting retention of TORC2 in the cytoplasm.

**Product:**

Rabbit IgG, 1mg/ml in PBS with 0.02% sodium azide, 50% glycerol, pH7.2

**Molecular Weight:**

~ 84 kDa

**Swiss-Prot:**

Q8N568

**Purification&Purity:**

The antibody was affinity-purified from rabbit antiserum by affinity-chromatography using epitope-specific immunogen and the purity is > 95% (by SDS-PAGE).

**Applications:**

WB: 1:500~1:1000

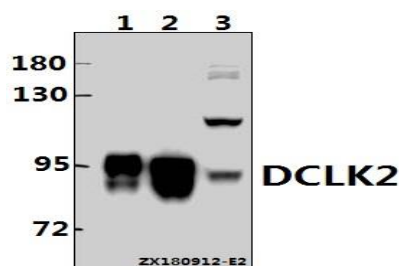
**Storage&Stability:**

Store at 4 °C short term. Aliquot and store at -20 °C long

term. Avoid freeze-thaw cycles.

**Specificity:**

DCLK2 (E8) polyclonal antibody detects endogenous levels of DCLK2 protein.

**DATA:**

Western blot (WB) analysis of DCLK2 (E8) polyclonal antibody at 1:500 dilution

Lane1:The Brain tissue lysate of Mouse(10ug)

Lane2:The Brain tissue lysate of Rat(40ug)

Lane3:Hela whole cell lysate(40ug)

**Note:**

For research use only, not for use in diagnostic procedure.