

**DDX3 (S63) polyclonal antibody**

Catalog: BCP00651

Host: Rabbit

Reactivity: Human, Mouse, Rat

**BackGround:**

DDX3 contains all of the motifs of the DEAD box family of RNA helicases, including the Asp/Glu/Ala/Asp sequence that gives the protein family its name and distinguishes it from other RNA helicases. DDX3 is localized to the X chromosome and has a highly conserved functional homolog (DBY) on the Y chromosome. DDX3 is thought to be involved in RNA splicing, RNA transport, and translation initiation. It is also involved in cell growth control and is deregulated in hepatitis virus associated hepatocellular carcinoma. Recent experiments suppressing DDX3 expression blocked HIV1 RNA export from the nucleus, suggesting that DDX3 functions as a shuttling protein that transports the HIV1 protein Rev and its cofactor CRM1 from the nucleus to the cytoplasm.

**Product:**

Rabbit IgG, 1mg/ml in PBS with 0.02% sodium azide, 50% glycerol, pH7.2

**Molecular Weight:**

~ 75 kDa

**Swiss-Prot:**

O00571

**Purification&Purity:**

The antibody was affinity-purified from rabbit antiserum by affinity-chromatography using epitope-specific immunogen and the purity is > 95% (by SDS-PAGE).

**Applications:**

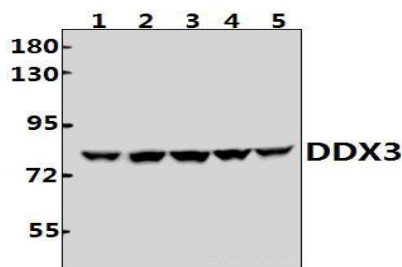
WB: 1:500~1:1000

**Storage&Stability:**

Store at 4 °C short term. Aliquot and store at -20 °C long term. Avoid freeze-thaw cycles.

**Specificity:**

DDX3 (S63) polyclonal antibody detects endogenous levels of DDX3 protein.

**DATA:**

Western blot (WB) analysis of DDX3 (S63) pAb at 1:500 dilution

Lane1:PC3 whole cell lysate(40ug)

Lane2:A549 whole cell lysate(40ug)

Lane3:HepG2 whole cell lysate(40ug)

Lane4:C6 whole cell lysate(40ug)

Lane5:AML-12 whole cell lysate(40ug)

**Note:**

For research use only, not for use in diagnostic procedure.