

DLC1 polyclonal antibody

Catalog: BCP00657

Host: Rabbit

Reactivity: Mouse,Rat

BackGround:

This gene encodes a GTPase-activating protein (GAP) that is a member of the rhoGAP family of proteins which play a role in the regulation of small GTP-binding proteins. GAP family proteins participate in signaling pathways that regulate cell processes involved in cytoskeletal changes. This gene functions as a tumor suppressor gene in a number of common cancers, including prostate, lung, colorectal, and breast cancers. Multiple transcript variants due to alternative promoters and alternative splicing have been found for this gene.

Product:

Rabbit IgG, 1mg/ml in PBS with 0.02% sodium azide, 50% glycerol, pH7.2

Molecular Weight:

~171 kDa

Swiss-Prot:

Q96QB1

Purification&Purity:

The antibody was affinity-purified from rabbit antiserum by affinity-chromatography using epitope-specific immunogen and the purity is > 95% (by SDS-PAGE).

Applications:

WB 1:500 - 1:2000

IHC 1:50 - 1:200

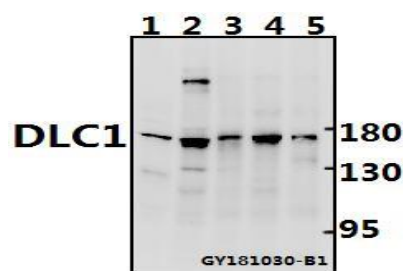
Storage&Stability:

Store at 4 °C short term. Aliquot and store at -20 °C long term. Avoid freeze-thaw cycles.

Specificity:

DLC1 polyclonal antibody detects endogenous levels of DLC1 protein.

DATA:



Western blot (WB) analysis of DLC1 pAb at 1:500 dilution

Lane1:C6 whole cell lysate(40ug)

Lane2:CT26 whole cell lysate(40ug)

Lane3:HCT116 whole cell lysate(40ug)

Lane4:A2780 whole cell lysate(40ug)

Lane5:PC3 whole cell lysate(40ug)

Note:

For research use only, not for use in diagnostic procedure.