

Dynamin-1 (V768) polyclonal antibody

Catalog: BCP00675

Host: Rabbit

Reactivity: Human, Mouse, Rat

BackGround:

Members of the Dynamin family, including Dynamin I and Dynamin II, are GTPase, microtubule-associated proteins which are involved in endocytosis, synaptic transmission and neurogenesis. Dynamin I is localized to the central nervous system, while Dynamin II exhibits ubiquitous distribution with highest expression in testis. Both Dynamin proteins contain SH3 and proline-rich domains that mediate interactions between the Dynamins and effectors of their GTPase activity. The interactions with these effectors, which include microtubules, acidic phospholipids and SH3 domain-containing proteins, are required for rapid endocytosis. Dynamin I appears to be recruited to Clathrin coated pits by SH3 domain interaction with Amphiphysin, a protein highly expressed in brain.

Product:

Rabbit IgG, 1mg/ml in PBS with 0.02% sodium azide, 50% glycerol, pH7.2

Molecular Weight:

~ 98 kDa

Swiss-Prot:

Q05193

Purification&Purity:

The antibody was affinity-purified from rabbit antiserum by affinity-chromatography using epitope-specific immunogen and the purity is > 95% (by SDS-PAGE).

Applications:

WB: 1:500~1:1000

IHC: 1:50~1:200

Storage&Stability:

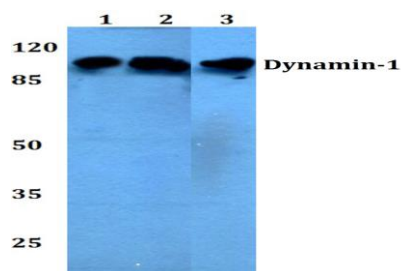
Store at 4 °C short term. Aliquot and store at -20 °C long

term. Avoid freeze-thaw cycles.

Specificity:

Dynamin-1 (V768) polyclonal antibody detects endogenous levels of Dynamin-1 protein.

DATA:



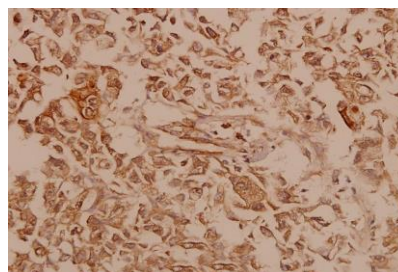
Western blot (WB) analysis of Dynamin-1 (V768) pAb at 1:500 dilution

Lane1:HCT116 whole cell lysate(40ug)

Lane2:MCF-7 whole cell lysate(40ug)

Lane3:PC12 whole cell lysate(40ug)

Lane4:CT26 whole cell lysate(40ug)



Immunohistochemistry (IHC) analyzes of Dynamin-1 (V768) pAb in paraffin-embedded human breast carcinoma tissue at 1:50.

Note:

For research use only, not for use in diagnostic procedure.